

WILLI GELLER
Creation
PRODUCT CATALOGUE





“I have no secret – my success is a result of all my experiences.”

Simply Brilliant – then as now

Inspired by the desire for a unique and vital copy of nature’s own creation, the internationally renowned dental technician Willi Geller created a metal and ceramics range in 1988 which made quite a splash: **perfect, almost natural restorations** became possible all at once – masterly in their physical properties and reliable and reproducible in terms of shading. With Creation, each tooth was suddenly able to retain its own character – in shade, form and function

The new ceramic materials from Switzerland quickly set the trend for dental technology worldwide. Geller’s **“master ceramics”** and his distinctive layering technique set benchmarks for a top-class dental aesthetic. Through the opportunity for ideal natural replicas, and through the seemingly **inexhaustible variety** of the metal and ceramics range, the dental technician gained an entirely new profile – the profile of an artist.

Experience as a source of success

Founded as a “one-man company” 30 years ago, the dental company has continued to grow and develop steadily: new manufacturing technologies, additional fusions and effect materials, as well as **expanded indications and, more recently, a light-curing veneer composite with “Creation Brilliance”**. Today, Creation is one of the world’s most important manufacturers of ambitious ceramics systems, and resin and composite teeth with a strong profile. The innovative ceramic and composite materials and denture teeth are successfully processed in over 70 countries **across the globe**. And the users are not the only ones who are impressed; dentists and patients are also convinced by our “Simply Brilliant“ aesthetics concept.

Willi Geller’s dental creations represent the original – and are just as brilliant today.



Creation Highlights

VENEERING CERAMIC	Page	CERAMIC ACCESSORIES	Page
Metal		CreaPen-Separating Pen	36
Creation CC – Classic Metal Ceramic	05	Liquid Firing Pad	36
		Creation Brush Kit	36
Zirconium		Aqualine master	37
Creation ZI-CT – Zirconium Dioxide Ceramic	10	Aqualine smart	37
Creation ZI-F – Low-Fusing Zirconium Dioxide Ceramic	14	Aqualine mini	37
Lithium Disilicate			
Creation LS/LS Press – Lithium Disilicate			
Veneering and Pressable Ceramic	18		
OT+ AND GELLER-MIX	Page	COMPOSITE	Page
Opal Transpa OT+ and Geller-Mix	24	Classic	
		Creation VC	38
COLOURS	Page	DENTURE TEETH	Page
Magic Colour	26	Creopal	47
		Creapearl 2	52
CreaColor			
Make up Neo	30		
In Nova Neo	30		
LIQUIDS	Page	PRODUCT LIST	Page
Modelling Liquid – High & Low Fusing	32	Product List	58
Opaque Liquid – High Fusing	32		
Shoulder Liquid	32		
Universal & Glaze Liquid	32		
Moisturing Fluid	33		
Magic Colour Liquid GL & Special Liquid ML	33		
Make up Neo Fluid & Reconditioner	33		
In Nova Neo Fluid	33		
SHADE GUIDES	Page		
Creation Shade Guides	34		

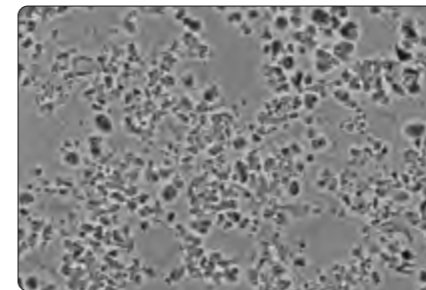
CERAMIC

“Creation is the only eligible choice for a dental technician to create convincing, which means naturally appearing, restorations.”

Hubert Schenk



REM-picture,
etched, ceramic surface:



Leucite-reinforced metal ceramic CC

CREATION CC –
technically refined – inspired by nature

Creation CC is a high- fusing metal ceramic with unique optical and physical properties that has developed constantly in line with growing aesthetic demands – **recognized worldwide for 30 years!**

The perfectly coordinated ceramic materials have excellent homogeneity and thus guarantee high flexural strength. The result: a densely sintered structure for **pure and non-porous layering** with the utmost reliability.

The pure potash feldspar with micro-pure leucite crystal structure in Creation CC creates iridescent light refraction and natural brilliance and enhances the strength. Exceptional colour nuances can additionally be created with the unique effect materials.

The ceramic bonder Crea Alloy Bond also acts as a CTE buffer between metal and ceramic – for improved adhesive properties to non-precious metal and greater colour reliability.

With the modular classic brand Creation CC, metal-ceramic restorations can be produced with impressive aesthetics and dimensional stability – for **superb dental artistry!**

Creation CC – natural brilliance and efficiency.

THE BRILLIANCE OF CREATION CC:

- Unique, lifelike aesthetics thanks to highly pure potash feldspar
- Resilience due to consistently high flexural strength
- Natural colour effect and light dynamics due to leucite crystals
- Ease of handling thanks to consistent colour and layering system
- Processing reliability since 1988



CC Creapast Kit | 000300
Complete paste opaques with modifier

- 16 Opaque O-A1-D4 3g
- 5 Opaque Dentine Modifier . 3g
- 1 Creapast Brush
- 1 CC Manual



CC Bleach Shades Kit | 000250
Complete bleach shades colours

- 1 Bleach Creapast Opaque O-AB 3g
- 3 Bleach Dentine BD-A, B, BO 20g
- 1 Bleach Enamel S-AB . . . 20g
- 1 Bleach Shoulder SP-AB. 15g
- 1 Shoulder Liquid 25ml
- 1 Modelling Liquid ML-H. 25ml
- 1 Bleach Shade Guide
- 1 CC Color Chart/Firing Chart



CC Opaque Kit | 000800
Complete powder opaques with modifier

- 16 Opaque O-A1-D4 20g
- 8 Opaque Modifier OM-11-17, G 15g
- 1 Foundation Opaque FOP 20g
- 2 Opaque Liquid OL-H . . 50ml
- 1 Universal & Glaze Liquid 25ml
- 1 Shade Guide
- 1 CC Color Chart
- 1 CC Manual



CC Gingiva Kit | 001590
Complete gingiva colours

- 1 Creapast Opaque O-G. . . 3g
- 1 Opaque Modifier OM-G . 15g
- 8 Gingiva G1-7, N. 15g
- 1 Opaque Liquid OL-H . . 25ml
- 1 Modelling Liquid ML-H . 25ml
- 1 Shade Guide



CC Kit 1 | 000804
Basic porcelains kit (opaque dentines, dentines, incisals)

- 16 Opaque Dentine OD-A1-D4 15g
- 16 Dentine D-A1-D4. 20g
- 4 Enamel E-57-60 20g
- 2 Transpa NT, OT 20g
- 1 Clear CL-O 20g
- 1 Glaze GL 10g
- 2 Modelling Liquid ML-H . 50ml
- 1 Universal & Glaze Liquid 25ml
- 2 Shade Guides
- 1 CC Color Chart
- 1 CC Manual



CC Shoulder Kit | 001503
Complete shoulder porcelains

- 10 Shoulder Powder SP-21-29, G 15g
- 1 Shoulder Liquid 25ml
- 1 CC Color Chart/Firing Chart



CC Kit 2 | 001508
Effect porcelains kit

- 5 Opaque Dentine OD-32, 37, 41, 43, 44. . 15g
- 1 Dentine D-CW 20g
- 2 Approximal Dentine AD-1, 2. 15g
- 1 Clear UC 20g
- 5 Transpa TI-1-5 20g
- 8 Effect Enamel SI-01-06, SO-10, 11 . . . 20g
- 4 Pearl Enamel PS-0-3. . . 20g
- 6 Neck Transpa HT-51-56 15g
- 6 Make In MI-61-66 15g
- 1 Correction Powder KM. . 20g
- 2 Modelling Liquid ML-H 50ml
- 1 Universal & Glaze Liquid 25ml
- 2 Shade Guides
- 1 CC Color Chart
- 1 CC Manual



CC Transition Dentine Kit | 000801
Basic porcelains kit (transition dentines, incisals)

- 16 Opaque Dentine OD-A1-D4 15g
- 16 Transition Dentine TD-A1-D4 20g
- 4 Enamel E-57-60 20g
- 1 Clear CL-O 20g
- 2 Transpa NT, OT 20g
- 1 Glaze GL 10g
- 2 Modelling Liquid ML-H . 50ml
- 1 Universal & Glaze Liquid 25ml
- 1 Shade Guide
- 1 CC Color Chart
- 1 CC Manual



CC Starter Kit | 000915
Introduction kit with tooth shades A2, A3, A3.5, B2, B3

- | | |
|--|--|
| 2 Crea Alloy Bond 4g | 5 Transpa NT, OT, TI-1, 4, 5 20g |
| 5 Creapast Opaque. 3g | 2 Effect Enamel SI-02, 04 . 20g |
| 5 Opaque Dentine 15g | 3 Neck Transpa HT-52-54 15g |
| 3 Opaque Dentine OD-32, 37, 43 15g | 1 Glaze GL 10g |
| 5 Dentine 20g | 2 Make In MI-63, 65 15g |
| 2 Enamel E-58, 59 20g | 2 Modelling Liquid ML-H . 25ml |
| 1 Clear CL-O 20g | 2 Universal & Glaze Liquid 25ml |
| | 1 CC Manual |



CC Introduction Kit | 000920
Introduction kit with tooth shades A1, A2, A3, A3.5, B1, B2, C1, C2, C3, D2, D3

- | | |
|--|--|
| 11 Creapast Opaque. 3g | 3 Effect Enamel SI-02, 04, SO-10 20g |
| 3 Opaque Dentine OD-32, 37, 43 15g | 1 Pearl Enamel PS-1 20g |
| 11 Dentine 20g | 3 Neck Transpa HT-52-54 15g |
| 4 Enamel E-57-60 20g | 1 Glaze GL 10g |
| 1 Clear CL-O 20g | 1 Modelling Liquid ML-H . 50ml |
| 4 Transpa NT, TI-1, 2, 4 . . . 20g | 1 Universal & Glaze Liquid 25ml |
| | 1 CC Color Chart & CC Manual |

Crea Alloy Bond | 000080

Crea Alloy Bond is a bonding agent which was specially developed for neutralising leaking metallic oxides. At the same time it acts as an efficient CTE buffer between porcelain and metal alloy.



- Safety owing to high flexural strength (70 MPa)
- No marginal discolorations – staining metallic oxides are neutralised
- Greater colour reliability because of the golden yellow undertone
- Compatible with all materials from Creation CC and LF

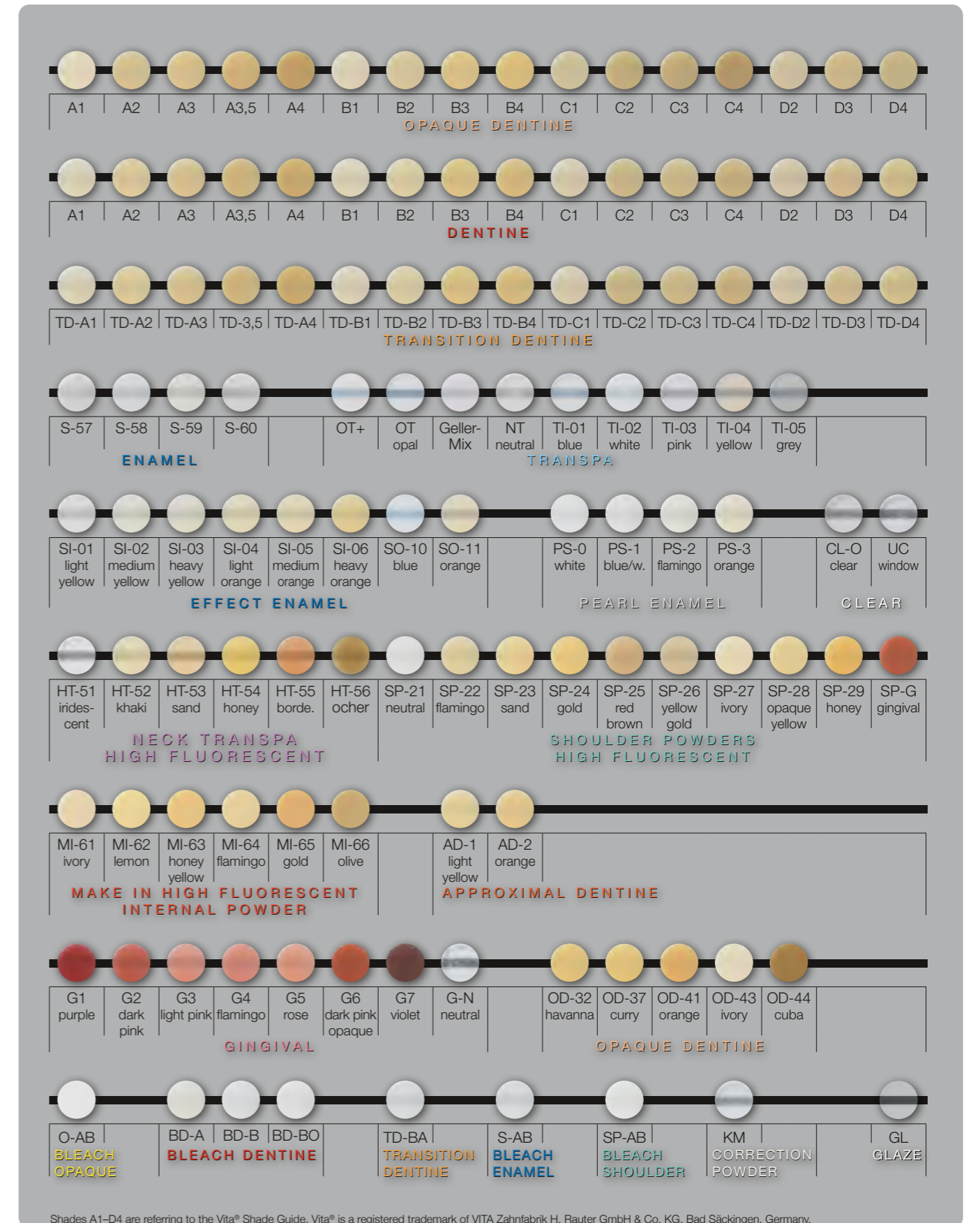
WOP Opaque

The coating of opaque can be carried out at only 950 °C instead of 980 °C with the WOP paste. This procedure is useful with certain high-gold alloys and galvanised frameworks. After the WOP coating the second coating of opaque is applied.



- Firing temperature 950 °C

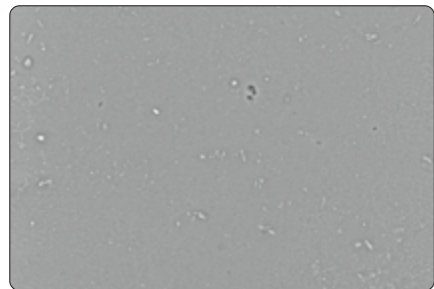
- | |
|--|
| CC Creapast WOP sand 3g 000322 |
| CC Creapast WOP sahara 3g 000323 |
| CC Creapast WOP gold 3g 000324 |



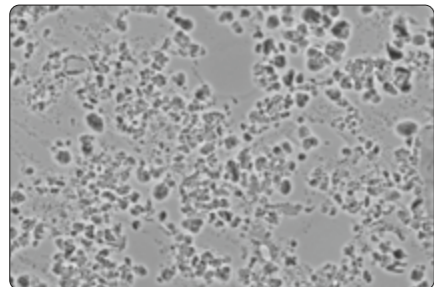
Shades A1-D4 are referring to the Vita® Shade Guide. Vita® is a registered trademark of VITA Zahnfabrik H. Rauter GmbH & Co. KG, Bad Säckingen, Germany.



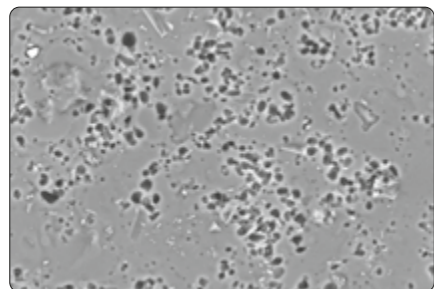
REM-pictures etched, ceramic surfaces:



Glass ceramic



Leucite-reinforced metal ceramic CC



Leucite-reinforced zirconium dioxide ceramics ZI-CT

CREATION ZI-CT – the fine art of ceramics

Creation ZI-CT is an innovative feldspar ceramic containing leucite crystals which is matched to the CTE of all high-strength zirconium dioxide frameworks and structures – whether white, coloured or translucent.

The high proportion of pure potash feldspars creates light scatter that is comparable to that of natural teeth and a **brilliant colour effect**, while the micro-fine leucite crystals improve mechanical strength and thereby ensure a **durable ceramic structure**.

Fascinatingly fluorescent: the special bonding agent Frame Shade NT guarantees strong adhesion to the zirconium dioxide framework and also increases its fluorescence – for **powerful bond strength** without tensile stresses.

The modular Creation ZI-CT allows restorative work on zirconium dioxide with impressive colour and dimensional stability and with **brilliant light reflection and dynamics**.

High-fusing, high aesthetics, high stability: Creation ZI-CT.

*“Unobtrusively beautiful – a true Creation!”
Andreas Nolte, MDT*

THE BRILLIANCE OF CREATION ZI-CT

- Natural colour effect and light dynamics due to leucite crystals
- Excellent bonding strength thanks to high firing temperature of 910 °C
- Extremely low shrinkage for fewer correction firings and more efficiency
- Reliability due to homogeneous crystalline structure and high resilience



ZI-CT Kit 1 | 620501
Basic porcelains kit (dentines, incisors)

- | | |
|--|---------------------------------|
| 1 Frame Shade NT 4g | 1 Correction Powder KM . . 20g |
| 5 Opaque Dentine
OD-32, 37, 41, 43, 44. . . 15g | 1 Glaze GL 10g |
| 16 Dentine D-A1–D4. 20g | 1 Universal & Glaze Liquid 25ml |
| 4 Enamel E-57–60 20g | 2 Modelling Liquid ML-H . 50ml |
| 1 Clear CL-O 20g | 1 ZI-CT Color Chart & Manual |
| 2 Transpa NT, OT 20g | |
| 2 Approximal Dentine
AD-1, 2. 15g | |



ZI-CT Kit 2 | 620502
Effect porcelains kit

- | | |
|---|---------------------------------|
| 1 Clear UC 20g | 1 Universal & Glaze Liquid 25ml |
| 5 Transpa TI-1–5. 20g | 2 Modelling Liquid ML-H . 50ml |
| 8 Effect Enamel
SI-01–06, SO-10, 11. . . 20g | 1 ZI-CT Color Chart & Manual |
| 4 Pearl Enamel PS-0–3. . . 20g | |
| 6 Neck Transpa
HT-51–56. 15g | |
| 6 Make In MI-61–66. . . . 15g | |



ZI-CT Starter Kit | 620503
Introduction kit with tooth shades A1, A2, A3, A3.5, B2, B3

- | | |
|---|----------------------------------|
| 1 Frame Shade NT 4g | 1 Pearl Enamel PS-0. 20g |
| 3 Opaque Dentine
OD-32, 37, 43 15g | 3 Neck Transpa HT-52–54 15g |
| 6 Dentine 20g | 3 Shoulder SP-21, 23, 28 . 15g |
| 2 Enamel E-58, 59 20g | 2 Make In MI-63, 65 15g |
| 1 Clear CL-O 20g | 1 Glaze GL 10g |
| 6 Transpa NT, OT
TI-1, 3–5 20g | 2 Modelling Liquid ML-H . 25ml |
| 2 Effect Enamel SI-02, 04 20g | 1 Shoulder Liquid 25ml |
| | 1 Universal & Glaze Liquid 25ml |
| | 1 ZI-CT Color Chart & Manual |



ZI-CT Introduction Kit | 620506
Introduction kit with tooth shades A1, A2, A3, A3.5, B1, B2, C1, C2, C3, D2, D3

- | | |
|---|---|
| 1 Frame Shade NT 4g | 1 Pearl Enamel PS-0. 20g |
| 3 Opaque Dentine
OD-32, 37, 43 15g | 3 Neck Transpa
HT-52–54. 15g |
| 11 Dentine 20g | 1 Glaze GL 10g |
| 1 Clear CL-O 20g | 2 Modelling Liquid ML-H . 50ml |
| 4 Enamel E-57–60 20g | 1 Universal & Glaze Liquid 25ml |
| 4 Transpa NT, TI-1, 3, 4 . . 20g | 1 ZI-CT Color Chart & Manual |
| 1 Effect Enamel SO-10 . . . 20g | |



ZI-CT Bleach Shades Kit | 620505
Complete bleach shades colours

- 3 Bleach Dentine
BD-A, B, BO 20g
- 1 Bleach Enamel S-AB 20g
- 1 Shoulder SP-AB. 15g
- 1 Modelling Liquid ML-H 25ml
- 1 Shoulder Liquid 25ml
- 1 ZI-CT Color Chart



ZI-CT Gingiva Kit | 620504
Complete gingiva colours

- 8 Gingiva G1-7, N. 15g
- 1 Modelling Liquid ML-H 25ml
- 1 ZI-CT Color Chart
Bleach & Gingiva



ZI-CT Shoulder Kit | 620507
Complete shoulder porcelains

- 10 Shoulder
SP-21-29, G 15g
- 1 Shoulder Liquid 25ml
- 1 ZI-CT Color Chart/Firing Chart

A1	A2	A3	A3,5	A4	B1	B2	B3	B4	C1	C2	C3	C4	D2	D3	D4
DENTINE															
E-57	E-58	E-59	E-60		OT+	OT opal	Geller-Mix	NT neutral	TI-01 blue	TI-02 white	TI-03 pink	TI-04 yellow	TI-05 grey		
ENAMEL				TRANSPA											
SI-01 light yellow	SI-02 medium yellow	SI-03 heavy yellow	SI-04 light orange	SI-05 medium orange	SI-06 heavy orange	SO-10 blue	SO-11 orange		PS-0 white	PS-1 blue/w.	PS-2 flamingo	PS-3 orange		CL-O clear	UC window
EFFECT ENAMEL									PEARL ENAMEL				CLEAR		
HT-51 iridescent	HT-52 khaki	HT-53 sand	HT-54 honey	HT-55 borde.	HT-56 ocher	SP-21 neutral	SP-22 flamingo	SP-23 sand	SP-24 gold	SP-25 red brown	SP-26 yellow gold	SP-27 ivory	SP-28 opaque yellow	SP-29 honey	
NECK TRANSPA HIGH FLUORESCENT						SHOULDER POWDERS HIGH FLUORESCENT									
MI-61 ivory	MI-62 lemon	MI-63 honey yellow	MI-64 flamingo	MI-65 gold	MI-66 olive		AD-1 light yellow	AD-2 orange							
MAKE IN HIGH FLUORESCENT INTERNAL POWDER						APPROXIMAL DENTINE									
G1 purple	G2 dark pink	G3 light pink	G4 flamingo	G5 rose	G6 dark pink opaque	G7 violet	G-N neutral		OD-32 havanna	OD-37 curry	OD-41 orange	OD-43 ivory	OD-44 cuba		
GINGIVAL							OPAQUE DENTINE								
BD-A	BD-B	BD-BO		S-AB	SP-AB	KM									GL
BLEACH DENTINE			BLEACH EN.			BLEACH SHOULDER			CORRECTION POWDER						GLAZE

Shades A1-D4 are referring to the Vita® Shade Guide. Vita® is a registered trademark of VITA Zahnfabrik H. Rauter GmbH & Co. KG, Bad Säckingen, Germany.



CREATION ZI-F – naturally brilliant – brilliantly natural

Creation ZI-F is a tried and tested zirconium dioxide ceramic. It is perfectly suited to veneering any kind of zirconium dioxide framework.

At the same time, the modular materials are also an ideal choice as **add-on materials** for Creation ZI-CT because their firing temperature is about 100°C lower than the high-fusing zirconium dioxide veneering ceramic.

Creation ZI-F is an **extremely versatile** zirconium dioxide ceramic with high **natural light reflection**, combined with all the material-related advantages of zirconium dioxide.

With the unique effect materials, exceptional colour nuances can also be created rapidly and comfortably – for maximum impact with minimum effort.

Creation ZI-F – natural light dynamics!



ZI-F Kit 1 | 653010
Basic porcelains kit (dentines, incisals)

- | | |
|---|---------------------------------|
| 5 Frame Shade FS-1-4, IL 10g | 2 Modelling Liquid ML-L . 50ml |
| 16 Dentine D-A1-D4 20g | 1 Universal & Glaze Liquid 25ml |
| 4 Enamel E-57-60 20g | 2 Shade Guides |
| 2 Clear CL-O, UC 20g | 1 ZI-F Color Chart |
| 6 Transpa NT, OT, TI-1, 3-5 20g | 1 ZI-F Manual |
| 1 Glaze GL 10g | |



ZI-F Kit 2 | 653015
Effect porcelains kit

- | | |
|--|---|
| 5 Opaque Dentine OD-32, 37, 41, 43, 44 . . 15g | 2 Approximal Dentine AD-1, 2. 15g |
| 5 Effect Enamel SI-02, 04, 06, SO-10, 11 20g | 1 Shoulder Liquid 25ml |
| 2 Pearl Enamel PS-0, 3. 20g | 2 Modelling Liquid ML-L . 25ml |
| 3 Neck Transpa HT-52-54 15g | 1 Universal & Glaze Liquid 25ml |
| 5 Shoulder SP-22-25, 28 . 15g | 2 Shade Guides |
| 3 Make In MI-61, 63, 65 . . 15g | 1 ZI-F Color Chart |
| | 1 ZI-F Manual |
| | 1 ZI-F Color Chart/Firing Chart |



ZI-F Bleach Shades Kit | 652050
Complete bleach shades colours

- | | |
|--|----------------------------------|
| 1 Bleach Frame Shade FS-AB 10g | 1 Shoulder Liquid 25ml |
| 3 Bleach Dentine BD-A, B, BO 20g | 1 Modelling Liquid ML-L . 25ml |
| 1 Bleach Enamel S-AB 20g | 1 Shade Guide |
| 1 Bleach Shoulder SP-AB. 15g | 1 ZI-F Color Chart/Firing Chart |



ZI-F Gingiva Kit | 603030
Complete gingiva colours

- | |
|----------------------------------|
| 1 Frame Shade FS-G 10g |
| 8 Gingiva G1-7, N 15g |
| 1 Modelling Liquid ML-L . 25ml |
| 1 Shade Guide |



ZI-F Starter Kit | 653025
Introduction kit with tooth shades A1, A2, A3, A3.5, B2, B3

- | | |
|--|-----------------------------------|
| 2 Frame Shade FS-1, 2 10g | 3 Neck Transpa HT-52-54 15g |
| 3 Opaque Dentine OD-32, 37, 43 15g | 3 Shoulder SP-22, 23, 28 . 15g |
| 6 Dentine 20g | 2 Make In MI-63, 65 15g |
| 2 Enamel E-58, 59 20g | 1 Glaze GL 10g |
| 1 Clear CL-O 20g | 1 Shoulder Liquid 25ml |
| 6 Transpa NT, OT, TI-1, 3-5 20g | 2 Modelling Liquid ML-L . 25ml |
| 2 Effect Enamel SI-02, 04 . 20g | 1 Universal & Glaze Liquid 25ml |
| 1 Pearl Enamel PS-0. 20g | 1 ZI-F Color Chart |
| | 1 ZI-F Manual |



ZI-F Single Products

- | | |
|-----------------------|----------------------|
| Frameshade FS-NT | 601087 4g |
| Shoulder Powder SP-21 | 602121 15g |
| Transpa TI-2 | 652077 20g |
| Neck Transpa HT-51 | 652151 15g |
| Neck Transpa HT-56 | 652156 15g |
| Correction Powder KM | 652090 20g |

16 Creation ZI-F – Color Chart

A1	A2	A3	A3,5	A4	B1	B2	B3	B4	C1	C2	C3	C4	D2	D3	D4
DENTINE															
OD-32 havanna	OD-37 curry	OD-41 orange	OD-43 ivory	OD-44 cuba		E-57	E-58	E-59	E-60						
OPAQUE DENTINE					ENAMEL										
CL-O clear	UC window		OT+	OT opal	Geller- Mix	NT neutral	TI-01 blue	TI-02 white	TI-03 pink	TI-04 yellow	TI-05 grey				
CLEAR															
PS-0 white	PS-3 orange		SI-02 medium yellow	SI-04 light orange	SI-06 heavy orange	SO-10 blue	SO-11 orange		HT-51 irides- cent	HT-52 khaki	HT-53 sand	HT-54 honey	HT-56 ocher		
PEARL ENAMEL			EFFECT ENAMEL				NECK TRANSPA HIGH FLUORESCENT								
SP-21 neutral	SP-22 flamingo	SP-23 sand	SP-24 gold	SP-25 red brown	SP-28 opaque yellow										
SHOULDER POWDERS HIGH FLUORESCENT															
MI-61 ivory	MI-63 honey yellow	MI-65 gold	AD-1 light yellow	AD-2 orange		G1 purple	G2 dark pink	G3 light pink	G4 flamingo	G5 rose	G6 dark pink opaque	G7 violet	G-N neutral		
MAKE IN HIGH FLUORESCENT INTERNAL POWDER			APPROXIMAL D.			GINGIVAL									
BD-A	BD-B	BD-BO	S-AB	SP-AB	KM										GL
BLEACH DENTINE			BLEACH EN.		BLEACH SH.		CORRECTION POWDER						GLAZE		

Shades A1–D4 are referring to the Vita® Shade Guide. Vita® is a registered trademark of VITA Zahnfabrik H. Rauter GmbH & Co. KG, Bad Säckingen, Germany.



LITHIUM DISILICATE

“With Creation LS, there is now finally a veneering ceramic for lithium disilicate, which offers me a wide scope for creating restorations with a natural effect. The colour concept matches that of the tried and tested Creation ceramics, with an outstanding light reflection, plenty of brightness and strong, dynamic colours. The combination of Creation LS Press and Creation LS provides me with many benefits in my daily work, and makes it easier for me to create restorations with a vivid effect.”

Sebastien Mosconi, Oral Design



CREATION LS/LS Press – Press, veneer and individualise with lithium disilicate!

Efficiency and natural aesthetics: Creation LS Press and Creation LS are a perfect ceramic symbiosis offering dental technicians reliability and stability but also brilliant colours and versatility on and with lithium disilicate, as standard is not enough for Creation!

Creation Willi Geller completes the product range with a new pressable and veneering ceramic allowing the dental technician outstanding aesthetics, whether used single or in combination. With the Creation LS Press blanks and the Creation LS veneering ceramic perfectly matched to the lithium disilicate frame highly aesthetic and stable all-ceramic restorations can be manufactured – efficiently pressed and then individually veneered resp. characterised with the proven CreaColor stains and modifiers.

Reliably combined for extended possibilities: the two system components Creation LS Press and Creation LS follow master ceramist Willi Geller's "Simply Brilliant" philosophy proven for 30 years. They allow the dental technician manufacturing naturally beautiful anterior and posterior restorations with resp. on lithium disilicate assuring system safety.

Creation LS / LS Press – the sophisticated combination

THE BRILLIANCE OF THE CREATION LS:

- Comprehensive colour assortment for individual veneering and characterisation
- Layer build-up according to the tried-and-tested colour coding concept of Creation Willi Geller
- Natural colour brilliance and light effects due to feldspar content
- Homogeneous crystal structure and outstanding surface density
- Maximum stability – even after several firings

THE BRILLIANCE OF THE CREATION LS PRESS:

- High strength due to homogeneous crystalline structure: > 500 MPa
- Minimal invasive preparation: 0.3 mm veneer, 0.8 mm anterior
- Creative freedom of manufacturing: full veneers, partial veneers
- The appropriate blank for every indication



LS Kit | 830083

Basic and effect porcelains with the tooth shades BD-A, BD-B, BD-B0, A1, A2, A3, A3.5, B1, B2, B3, C2, D2

- | | |
|--|--|
| 4 Opaque Dentine
OD-32, 37, 41, 43 15 g | 3 Effect Enamel
SI-02, 04, SO-10 20 g |
| 12 Dentine BD-A, BD-B, BD-B0,
A1-A3.5, B1-B3, C2, D2 20 g | 1 Pearl Enamel PS-0 20 g |
| 4 Enamel E-57-60 20 g | 4 Neck Transpa HT-51-54. 15 g |
| 1 Bleach Enamel S-AB . . . 20 g | 2 Make-in MI-61, 63 15 g |
| 1 Clear CL-0 20 g | 1 Glaze GL 10 g |
| 7 Transpa NT, OT,
TI-01-05 20 g | 2 Modelling Liquid ML-L . 50 ml |
| | 1 Universal & Glaze Liquid 25 ml |
| | 1 Creation LS/LS Press Manual |



Creation LS Press MO-Ingot (Medium Opacity)

MO press ingots are the first choice for full veneering. Due to their high opacity, they feature a high light reflection and are suitable for covering discoloured dies and titanium abutments.

Colours

- MO-0, MO-1, MO-2 5 x 3 g



LS Press Starter Kit | 830080

Introduction kit with the tooth shades BD-A, BD-B0, A1, A2, A3 and matching press blanks with different opacities MO, LT, MT, HT

- | | |
|--|--|
| 3 LS Press MO-0-2. . . . 5 x 3 g | 1 Clear CL-0 20 g |
| 1 LS Press LT-A. 5 x 3 g | 1 Transpa OT 20 g |
| 1 LS Press MT-B00. . . . 5 x 3 g | 2 Effect Enamel
SI-02, SO-10 20 g |
| 2 LS Press HT-2, 3 5 x 3 g | 1 Pearl Enamel PS-0 20 g |
| 2 Opaque Dentine
OD-32, 41 15 g | 1 Make-in MI-61, 63 15 g |
| 5 Dentine BD-A, BD-B0,
D-A1-A3 20 g | 1 Glaze GL 10 g |
| 2 Enamel E-58, 59 20 g | 1 Modelling Liquid ML-L . 50 ml |
| 1 Bleach Enamel S-AB . . . 20 g | 1 Universal & Glaze Liquid 25 ml |
| | 1 Creation LS/LS Press Manual |



Creation LS Press LT-Ingot (Low Translucency)

LT press ingots can be used for restorations to be fully or partially veneered with Creation LS. With thin layer thicknesses, Creation LT can also be used for monolithic restorations.

Colours

- LT-A, LT-B, LT-C, LT-D. 5 x 3 g



LS Press Introduction Kit A1, A2 | 830081

The easy introduction into the system with the tooth shades A1, A2 and the matching press blanks with different opacities MO-1, LT-A, HT-2

- | | |
|-----------------------------------|----------------------------------|
| 1 LS Press MO-1 5 x 3 g | 1 Clear CL-0 20 g |
| 1 LS Press LT-A. 5 x 3 g | 1 Transpa OT 20 g |
| 1 LS Press HT-2 5 x 3 g | 1 Glaze GL 10 g |
| 1 Opaque Dentine OD-32 . 15 g | 1 Modelling Liquid ML-L . 50 ml |
| 2 Dentine D-A1, A2 20 g | 1 Universal & Glaze Liquid 25 ml |
| 1 Enamel E-58 20 g | 1 Creation LS/LS Press Manual |



Creation LS Press MT-Ingot (Medium Translucency)

MT press ingots are the first choice for fully-anatomic restorations which are characterised by individual staining. The MT ingot can also be used for full or partial veneering.

Colours

- MT-B00, MT-B0, MT-A1-3, MT-B1, B2, MT-D2. 5 x 3 g



LS Press Introduction Kit A3 | 830082

The easy introduction into the system with the tooth shade A3 and the matching press blanks with different opacities MO-2, LT-A, HT-3

- | | |
|-----------------------------------|----------------------------------|
| 1 LS Press MO-2 5 x 3 g | 1 Clear CL-0 20 g |
| 1 LS Press LT-A. 5 x 3 g | 1 Transpa OT 20 g |
| 1 LS Press HT-3 5 x 3 g | 1 Glaze GL 10 g |
| 1 Opaque Dentine OD-32 . 15 g | 1 Modelling Liquid ML-L . 50 ml |
| 2 Dentine D-A3 20 g | 1 Universal & Glaze Liquid 25 ml |
| 1 Enamel E-59 20 g | 1 Creation LS/LS Press Manual |
| 1 Effect Enamel SO-10 . . . 20 g | |



Creation LS Press HT-Ingot (High Translucency)

HT press ingots are particularly suitable for minimal invasive restorations (e.g. inlays, onlays and veneers) where mainly the natural enamel is replaced. The shade individualisation is carried out in the staining technique.

Colours

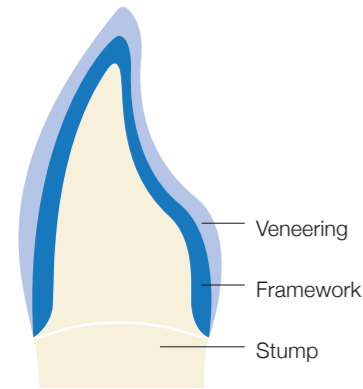
- HT-B00, HT-B0, HT-1-4 5 x 3 g

Processing techniques

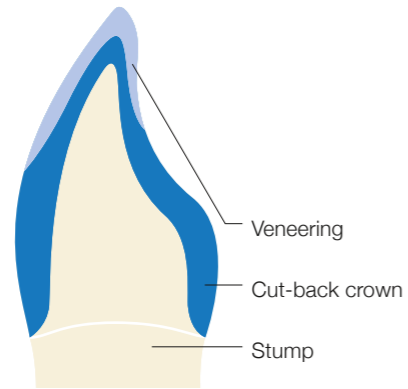
Opacity	Indications					Processing techniques		
	Occlusal veneers	Veneers	Inlays	Onlays	Crown	Staining technique	Cut-back technique	Layering technique
MO Medium Opacity					✓			✓
LT Low Translucency					✓		✓	✓
MT Medium Translucency	✓	✓	✓	✓	✓	✓	✓	
HT High Translucency	✓	✓	✓	✓	✓	✓		



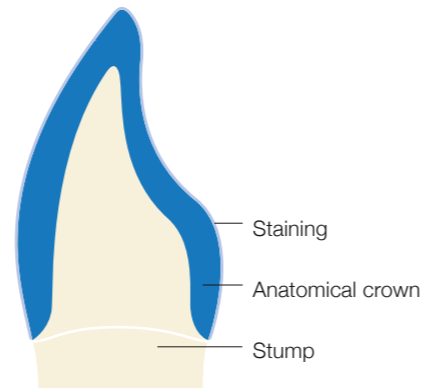
Layering technique



Cut-back technique



Staining technique



Colour reference table

Tooth colour	A1	A2	A3	A3,5	A4	B1	B2	B3	B4	C1	C2	C3	C4	D2	D3	D4
MO Medium Opacity	MO-1	MO-2			MO-1	MO-2	MO-1	MO-2								
LT Low Translucency	LT-A				LT-B			LT-C			LT-D					
MT Medium Translucency	MT-A1	MT-A2	MT-A2/-A3		MT-A3	MT-B0/-B1	MT-B2	MT-B2	MT-A3	MT-B1	MT-A1	MT-D2	MT-D2	MT-D2	MT-D2	MT-A2
HT High Translucency	HT-2		HT-3	HT-4	HT-1	HT-3			HT-4	HT-3	HT-4	HT-4		HT-3		

Materials which are not related to the Vita®shade guide:

Bleach	MO-0	MT-B00	MT-B0	HT-B00	HT-B0
--------	------	--------	-------	--------	-------

LS-PRESS COLOR CHART

DENTINE

A1 A2 A3 A3,5 A4 B1 B2 B3 B4 C1 C2 C3 C4 D2 D3 D4

BLEACH DENTINE

BD-A BD-B BD-BO OD-32 havanna OD-37 curry OD-41 orange OD-43 ivory E-57 E-58 E-59 E-60 S-AB

ENAMEL

BLEACH EN.

TRANSPA

OT+ OT opal Geller-Mix NT neutral TI-01 blue TI-02 white TI-03 pink TI-04 yellow TI-05 grey SI-02 medium yellow SI-04 light orange SO-10 blue PS-0 white

EFFECT ENAMEL

PEARL ENAMEL

NECK TRANSPA HIGH FLUORESCENT

HT-51 iridescent HT-52 khaki HT-53 sand HT-54 honey CL-O clear MI-61 ivory MI-63 honey yellow KM GL

CLEAR

MAKE IN HIGH FLUORESCENT INTERNAL POWDER

CORRECTION POWDER

GLAZE

MEDIUM OPACITY

MO-0 MO-1 MO-2

LOW TRANSLUCENCY

LT-A LT-B LT-C LT-D

MEDIUM TRANSLUCENCY

MT-B00 MT-B0 MT-A1 MT-A2 MT-A3 MT-B1 MT-B2 MT-D2

HIGH TRANSLUCENCY

HT-B00 HT-B0 HT-1 HT-2 HT-3 HT-4



Opal Transpa OT+ und Geller-Mix – highest opalescence and transparency for more liveliness

With the new Geller-Mix and the Opal Transpa OT+, Creation Willi Geller expands its ceramic range with two layering ceramics with opalescent properties. The opalescence caused by light scattering and reflection increases the light dynamics of dental restorations and makes dentures appear even more natural in the incisal area.

The Geller-Mix and OT+ expand the range of all layering ceramics.

Opal Transpa OT+ and Geller-Mix – expressive in the colour effect and brilliant in the result!

- **Opal Transpa OT+** is a layering ceramic for maximum opalescence raising the light dynamic effects of veneered restorations to a higher level. OT+ is almost colour neutral and intensifies the opalescent light effects of both light and dark tooth shades.
- The **Geller-Mix** has been mixed individually by professionals for many years and is now available as a finished product. The fired ceramic with its subtle opacity convinces with its harmonious balance between opalescence and brightness. This property creates vivid effects at light ridges and incisal edges especially with light tooth shades.

Opal Transpa OT+

The effect porcelain OT+ shows intense opal effects and is suitable for both light and dark tooth shades.

Scope of application:
mesial and distal light ridges and incisal edges.

CC/Transpa OT+	20g 000287
CC/Transpa OT+	50g 000587
ZI-CT/Transpa OT+	20g 620046
ZI-CT/Transpa OT+	50g 620246
ZI-F/Transpa OT+	20g 652087
ZI-F/Transpa OT+	50g 655087
LS/Transpa OT+	20g 830056



Geller-Mix

The Geller-Mix is particularly used for light tooth shades due to its subtle milky opacity.

Scope of application:
mesial and distal light ridges and incisal edges.

CC/Transpa Geller-Mix	20g 000288
CC/Transpa Geller-Mix	50g 000588
ZI-CT/Transpa Geller-Mix	20g 620047
ZI-CT/Transpa Geller-Mix	50g 620247
ZI-F/Transpa Geller-Mix	20g 652088
ZI-F/Transpa Geller-Mix	50g 655088
LS/Transpa Geller-Mix	20g 830057



MAGIC COLOUR

„The Magic Colour range contains all the shades necessary for the white and red aesthetics. Thanks to the powder-liquid concept, the consistency of the stains can be adjusted very individually, depending on requirements, and the intensity of the shades can be controlled. The stains cover white and pre-stained frameworks effectively and serve as the basis for microlayer shading. Magic Colour offers great freedom in the fabrication of monolithic restorations and the results are foreseeable.“

Stefan Picha – Oral Design



CREATION Magic Colour – a colour system designed for the handcraft

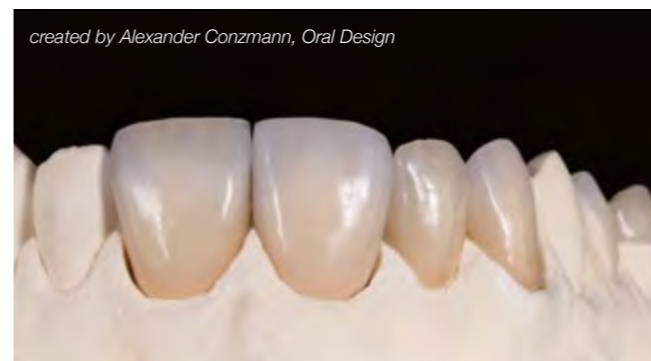
Digital production of monolithic restorations is efficient and the results are robust. Magic Colour was also developed to meet users' aesthetic demands. The compact colour system connects innovative manufacturing processes with every individual dental technician's craftsmanship expertise.

Uncompromising aesthetics

Magic Colour is used for accentuating and surface staining of monolithic zirconia or lithium disilicate restorations. As a powder-liquid combination, the colour system opens up numerous processing options and is very easy to use: Mixed with Magic Colour Liquid GL, the finely ground colour powders are extremely efficient as paste compounds, even in thin layers, and the results are foreseeable.

More brilliance, more natural depth

Whether used for surface varnishing, for characterising colour effects, or in combination with microlayering: Magic Colour is the starting point for multifaceted aesthetics. Microlayering with Creation ZI-F (with zirconia) or with Creation LS (with lithium disilicate) enhances aesthetics, depth effect and brilliance – especially with monolithic anterior restorations. Magic Colour makes every restoration bear the signature of the respective dental technician.



created by Alexander Conzmann, Oral Design

THE BRILLIANCE OF MAGIC COLOUR:

- Manifold processing options thanks to the powder-liquid system
- Surface characterisation of CAD, press and layered ceramics, especially of monolithic zirconia and lithium disilicate restorations
- Tinting of layering ceramics
- For surface staining and for use in combination with Microlayering
- Natural, optical effect from the fluorescence of the fine-grained powders



Magic Colour Professional Kit | 001205
The kit contains the full range of stains as well as glazes and liquids – for both white and red aesthetics.

- 4 Dentine Shade DS-A-D . . . 3g
- 15 Highlight HL-1-15 3g
- 2 Make In MI-61, 63 3g
- 3 Gingiva Shade GS-1-3. . . 3g
- 1 Glaze 3g
- 1 Glaze Fluo 3g
- 1 Liquid GL 50ml
- 1 Special Liquid ML 50ml
- 1 Brush



Magic Colour Starter Kit ZI-F | 001206
The Kit contains the most common stains, glazes and liquids for white aesthetics as well as two Creation ZI-F layering materials for microlayering zirconia restorations.

- 2 Dentine Shade DS-A, B . . 3g
- 6 Highlight HL-1, 4, 6, 8, 9, 11 3g
- 1 Make In MI-63 3g
- 1 ZI-F Transpa NT 20g
- 1 ZI-F Transpa OT 20g
- 1 Glaze 3g
- 1 Glaze Fluo 3g
- 1 Liquid GL 25ml
- 1 Special Liquid ML 25ml
- 1 Brush



Magic Colour Starter Kit LS | 001207
The Kit contains the most common stains, glazes and liquids for white aesthetics as well as two Creation LS layering materials for microlayering lithium disilicate restorations.

- 2 Dentine Shade DS-A, B . . 3g
- 6 Highlight HL-1, 4, 6, 8, 9, 11 3g
- 1 Make In MI-63 3g
- 1 LS Transpa NT 20g
- 1 LS Transpa OT 20g
- 1 Glaze 3g
- 1 Glaze Fluo 3g
- 1 Liquid GL 25ml
- 1 Special Liquid ML 25ml
- 1 Brush



created by Stefan Picha, Oral Design

MAGIC COLOUR CHART

DENTINE SHADE

DS-A	DS-B	DS-C	DS-D
------	------	------	------

HIGHLIGHT

HL-1 white	HL-2 eggshell	HL-3 lemon yellow	HL-4 mandarine	HL-5 flamingo	HL-6 apricot	HL-7 light brown	HL-8 medium brown	HL-9 olive	HL-10 red	HL-11 dove blue	HL-12 grey	HL-13 deep blue	HL-14 fissure	HL-15 illusion
------------	---------------	-------------------	----------------	---------------	--------------	------------------	-------------------	------------	-----------	-----------------	------------	-----------------	---------------	----------------

MAKE IN

MI-61 ivory	MI-63 honey yellow
-------------	--------------------

GINGIVA SHADE

GS-1 raspberry	GS-2 salmon red	GS-3 red violet
----------------	-----------------	-----------------

GLAZE

Glaze Fluo	Glaze
------------	-------

LIQUIDE

Liquid GL 25ml	Liquid GL 50ml
----------------	----------------

SPECIAL LIQUIDE

Special Liquid ML 25ml	Special Liquid ML 50ml
------------------------	------------------------



CREACOLOR –
stains and modifiers for all ceramics

CreaColor is a complete “two in one” colour system which can be used to place individual colour nuances simply and efficiently for all ceramic surfaces and materials – whether by the internal or external staining technique.

The physical properties of the high-quality stains and modifiers are so perfectly matched to the ceramic surfaces and materials that they can be worked universally with all layering and pressed ceramics, pressed or fired dentine cores as well as zirconium dioxide frames – after all, colour creativity should be unlimited! Furthermore, the new stains are extremely fine-grained and fluorescent and they can readily be mixed with each other.

CreaColor is made up of two components:

- CreaColor Make up Neo
- CreaColor In Nova Neo

THE BRILLIANCE OF CREACOLOR:

- Utmost colour brilliance for internal and external colouring
- Versatile and efficient: one system for all ceramics
- Natural colour effect due to very high fluorescence values
- Easy to handle: can be mixed with each other and can be corrected

CreaColor Kit | 001200
Contains Make up Neo Kit & In Nova Neo Kit



Make up Neo Kit | 001100
Glazing and fluorescent stains

- 13 Fluorescent Stain Glazes
MUN-F1–F13 4g
- 4 Dentine Shades MUN-FA–FD
in the four Vita® colour groups for colour corrections
and for painting onto press ingots 4g
- 1 Fluorescent Glaze GL-F 4g
- 1 Make up Neo Fluid 25ml
- 1 Make up Neo Reconditioner Fluid 8ml
(for freshening up concentrated stains)
- 1 Brush No. IV



In Nova Neo Kit | 001150
All-purpose modifiers

- 10 Fluorescent Modifiers
INN-1–10. 3g
- 2 Effect Shades IL, CRL (Illusion and Crackliner)
for individual accents 3g
- 1 In Nova Neo Fluid 25ml
- 1 Brush No. IV

CREACOLOR COLOR CHART WILLI GELLER
Creation

MAKE UP NEO

MUN-F1 white	MUN-F2 eggshell	MUN-F3 lemon yellow	MUN-F4 mandarine	MUN-F5 flamingo	MUN-F6 apricot	MUN-F7 light brown	MUN-F8 medium brown	MUN-F9 olive	MUN-F10 red
MUN-F11 blue	MUN-F12 grey	MUN-F13 deep blue	MUN-FA stain A	MUN-FB stain B	MUN-FC stain C	MUN-FD stain D	MUN-GL-F Glaze	UF	Recon- ditioner

IN NOVA NEO

INN-1 melone	INN-2 rose	INN-3 yellow	INN-4 red brown	INN-5 brown	INN-6 olive	INN-7 grey	INN-8 blue	INN-9 white	INN-10 mais	INN-CRL Crackli- ner	INN-IL Illusion	INN- FLUID

Fewer bottles – more simplicity and efficiency: For more clarity and space on the laboratory table, Creation liquids can be obtained in high fusion or low fusion versions.



Modelling Liquid – High & Low Fusing

Standard modelling liquid for mixing Creation ceramics except for shoulder ceramics (SP).

- ML-H (High) for high fusion ceramics Creation CC and ZI-CT
- ML-L (Low) for low fusion ceramic Creation ZI-F

Modelling Liquid High Fusing 25 ml | 000012
 Modelling Liquid High Fusing 50 ml | 000013
 Modelling Liquid High Fusing 250 ml | 000014
 Modelling Liquid High Fusing 1.000 ml | 000015

Modelling Liquid Low Fusing 25 ml | 000016
 Modelling Liquid Low Fusing 50 ml | 000017
 Modelling Liquid Low Fusing 250 ml | 000018



Opaque Liquid – High Fusing

Mixing liquid for the high fusion ceramic Creation CC.

Opaque Liquid High Fusing 25 ml | 000019
 Opaque Liquid High Fusing 50 ml | 000020
 Opaque Liquid High Fusing 250 ml | 000021

Shoulder Liquid

Universal modelling liquid for mixing all SP shoulder ceramics from Creation.

Shoulder Liquid 25 ml | 000025
 Shoulder Liquid 50 ml | 000026



Universal & Glaze Liquid

Additional universal liquid with a wide range of uses.

- Addition of a very small amount into the ceramic mixed with ML enhances the smoothness
- The pre-drying time must be extended during firing
- Mixing all Creation glazing materials and CreaColor colours
 In Nova Neo and Make up Neo
- Remoistening of Creapast

Universal & Glaze Liquid 25 ml | 000010
 Universal & Glaze Liquid 50 ml | 000011



Moisturing Fluid

For extensive restorations and complex corrections, as a moisturiser for the applied ceramics.

- No more drying out, the ceramics remain consistently modellable
- Efficient and simple: one fluid for all ceramics
- Longer working time for mixed materials – especially for sizeable work
- Targeted application due to controllable moisture content

Moisturing Fluid 25 ml | 000090

Magic Colour Liquid GL

Mixing fluid for stain and glaze powder especially developed for the stain technique.

Liquid GL 25 ml | 001241
 Liquid GL 50 ml | 001242



Magic Colour Special Liquid ML

Has been developed exclusively for micro layering with Creation ZI-F and Creation LS. It produces a homogeneous with dense ceramic consistency, which enables the application of material in very thin layers. Due to their low shrinkage and high density, the veneers exhibit a self-glaze effect after firing.

Special Liquid ML 25 ml | 001243
 Special Liquid ML 50 ml | 001244

Make up Neo Fluid

Mixing liquid for Make up Neo.

Make up Neo Fluid 25 ml | 001125

Make up Neo Reconditioner

For freshening up concentrated stains.

Make up Neo Reconditioner 8 ml | 001126



In Nova Neo Fluid

Mixing liquid for In Nova Neo.

In Nova Neo Fluid 25 ml | 001163

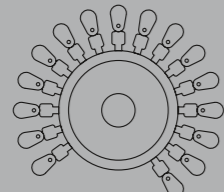
KIT-BASED SHADE GUIDES

Art. no.	Article name
000064	CC/Shade Guide Kit 1 804
000073	CC/Shade Guide Kit 2 1508
000076	ZI-F/Shade Guide Kit 1 (28 Shades)
000077	ZI-F/Shade Guide Kit 2 (26 Shades)
000087	CC/Shade Guide Transition Dentine
000092	ZI-CT/Shade Guide Kit 1
000093	ZI-CT/Shade Guide Kit 2

SHADE GUIDES

Shades A1–D4 are referring to the Vita® Shade Guide.
 Vita® is a registered trademark of VITA Zahnfabrik H. Rauter GmbH & Co. KG, Bad Säckingen, Germany.

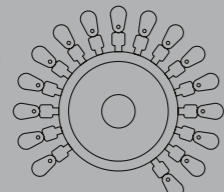
Shade Guide Dentine A - D



Art. no. 000040

A1	A2	A3	A3,5	A4	B1	B2	B3	B4
C1	C2	C3	C4	D2	D3	D4		

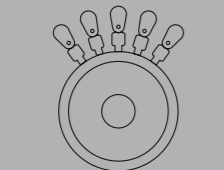
Shade Guide Opaque Dentine A - D



Art. no. 000041

A1	A2	A3	A3,5	A4	B1	B2	B3	B4
C1	C2	C3	C4	D2	D3	D4		

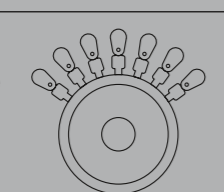
Shade Guide Transpa



Art. no. 000042

CL-O	UC	NT	OT	KM
------	----	----	----	----

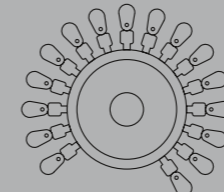
Shade Guide Opaque Dentine + AD



Art. no. 000043

OD-32	OD-37	OD-41	OD-43	OD-44	AD-1	AD-2
-------	-------	-------	-------	-------	------	------

Shade Guide Enamel



Art. no. 000044

57	58	59	60	SI-01	SI-02	SI-03	SI-04	SI-05
SI-06	SO-10	SO-11	PS-0	PS-1	PS-2	PS-3		

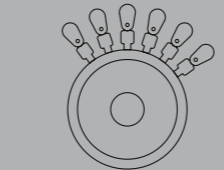
Shade Guide Transpa Modifier



Art. no. 000045

TI-01	TI-02	TI-03	TI-04	TI-05	
HT-51	HT-52	HT-53	HT-54	HT-55	HT-56

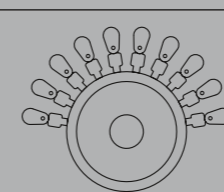
Shade Guide Make In



Art. no. 000046

MI-61	MI-62	MI-63	MI-64	MI-65	MI-66
-------	-------	-------	-------	-------	-------

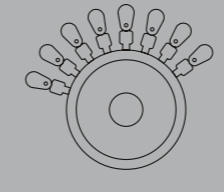
Shade Guide Shoulder



Art. no. 000047

SP-21	SP-22	SP-23	SP-24	SP-25	SP-26	SP-27	SP-28	SP-29
SP-G								

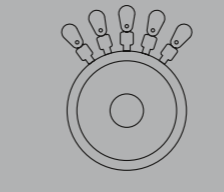
Shade Guide Gingiva



Art. no. 000048

G1	G2	G3	G4	G5	G6	G7	G-N
----	----	----	----	----	----	----	-----

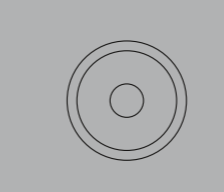
Shade Guide Bleach



Art. no. 000049

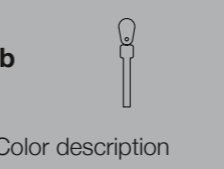
BD-A	BD-B	BD-BO	S-AB	SP-AB
------	------	-------	------	-------

Shade Guide Wheel Empty



Art. no. 000091

Shade Guide Single Shade Tab



Art. no. 000058 + Color description



CreaPen Separating Pen

The double-ended ceramic insulation pen with one pointed and one broad nib for surfaces or grooves respectively can be simply used on the sealed die.

CreaPen Separating Pen | 000059

Liquid Firing Pad

The liquid firing pad for all Creation systems precisely fixes the object on the fireproof tray.



- Stable hold on the firing tray
- Easy to handle because of proven dispenser design
- Safe because of firing stability and optimum heat/warmth build-up onto the object
- Economical because of precise measuring
- Can be used for all Creation systems
- Tough and easy to remove

Liquid Firing Pad | 000081

Creation Brush Kit

The six different sizes of the first-class Kolinsky red sable brush with a heavy wooden holder perfectly meet all the requirements of layering techniques.

Creation-Brush-Kit | 000136

- | | |
|--------------------------|----------------------------------|
| 1 Brush No. I 000131 | 4 Brush No. IV 000134 |
| 2 Brush No. II 000132 | 5 Brush No. V 000135 |
| 3 Brush No. III 000133 | 6 Brush Creapast No. VI 000321 |



aqua line



Aqualine Mixing Trays

With Aqualine, materials will always have the right viscosity. Drying out is prevented by the cellulose strips continuously absorbing liquid from the reservoir.

Aqualine master

Dimension: 335 x 225 x 25 mm
Components: Tray with glass plate (light grey) and hinged cover, self-adhesive write-on labels, cellulose strips

Aqualine master anthracite | AMA-001
Aqualine master white | AMA-002

Aqualine smart

Dimension: 260 x 170 x 32 mm
Components: Tray with glass plate (light grey) and hinged cover, self-adhesive write-on labels, cellulose strips

Aqualine smart anthracite | AS-001
Aqualine smart white | AS-002

Aqualine mini

Dimension: 133 x 71 x 23 mm
Components: Tray with glass plate (light grey) and hinged cover, cellulose strips

Aqualine mini anthracite | AM-001

ACCESSORIES

Aqualine master Glass Plate, printed light grey 1 piece | AP-010

Aqualine master Cellulose Strips 40 pieces AP-013

Aqualine master Labels, self-adhesive for stain 5 pieces | AMA-018 for ceramic 30 pieces | AMA-019

Aqualine smart Tray Set Zircon stain plate 3 pieces ST-003

Aqualine master Tray Set Zircon stain plate 4 pieces ST-004

Aqualine smart Glass Plate, printed light grey 1 piece | AS-010

Aqualine smart Cellulose Strips 30 pieces AS-012

Aqualine mini Tray Box with stain tray, with 15 cavities 1 piece AM-002

Aqualine mini Cellulose Strips 40 pieces AM-010

Aqualine Pool Set Dimension: 105 x 65 x 48 mm, rinsing cup 250 ml, sponge, sponge holder transparent AS-014

Aqualine Pool Set Sponge 5 pieces AS-015

Aqualine Glass Care 2 x 30 ml AC-001

Aqualine Two in One Build up Liquid 500 ml AC-002

COMPOSITE

“Creation VC is an aesthetic combination offering us versatile solutions. At the same time it gives us complete freedom to create amazing results with relatively little effort, for all indications from the aesthetic temporary to the final work.”

Hans-Joachim Lotz



CREATION VC – definitely aesthetic and versatile!

Brilliant colours, natural light dynamic, and high processing and system quality. The new micro-hybrid composite not only possesses unmatched durability and mechanical stability, but also well-balanced opalescence and translucence. Based on **hybrid MFR technology** and the **tried-and-tested colour coding concept**, it offers dental technicians a unique, versatile, colourfast and sturdy composite system, with a total of 102 individual porcelains in a user-friendly packaging concept. The **flow materials** are a particular highlight and can be processed almost like ceramic materials due to their excellent application and modelling properties, as well as the wide range of natural gingival shades and make-up stains – for vivid and effective **aesthetics in red and white!**

On the basis of a unique filler structure and the familiar colour and layer system used by ceramics specialists, natural analogue composite restoration with the tried-and-tested Creation brilliance is now possible.

Thanks to the non-adhesive consistency and balanced viscosity, the new composite material is ideal for modelling and can be polished to a fine shine.

The modular **Creation VC** complete system offers the dental technician a virtually unlimited number of colour and structural combinations, a wide spectrum of different consistencies and processing possibilities, and a customised portfolio of new technologies such as cuvette technology (pressing and injection methods), as well as compatibility with **Creopal Shell**.

Creation VC – an expressive and high-performance composite system.

THE BRILLIANCE OF CREATION VC:

- **Unique, natural-looking aesthetics** due to microhybrid filler structure/hybrid MFR technology
- **A wide variety of indications** for metal-supported and metal-free indications
- **Perfect, safe and co-ordinated combinations** with **Creopal Shells**
- **High mechanical strength**
- **Resilience** through equally high resistance to bending
- **Different viscosities**
- **Natural colour effect and light dynamics**
- **Safe processing and bonding** thanks to latest generation primers

VC Kit 1 | 820201

Basic materials kit (opaques, opaque dentines, dentines, incisals)

Amazingly simple and varied:

Beside 16 opaques, 5 opaque dentines and 16 standard dentines in high density colours, dental technicians also have 4 assigned incisal materials at their disposal for an individual aesthetic. In addition, the set contains a further 2 primers, a variety of accessories and 2 opaques:

VC Base Opaque O-BO: Paste opaque with excellent flow and light-curing qualities, also sets in undercuts for mechanical retentions, and provide a good primer.

VC Cervical Opaque O-CO: effectively prevents metal edges from showing through, directly applied after the VC Base Opaque. VC Cervical can also be used occlusally or lingually for intensifying, or mixed with the opaques.



- | | |
|----------------------------------|------------------------------|
| 1 Base Opaque O-BO . . . 2.4ml | 1 Metal Primer 5ml |
| 1 Cervical Opaque O-CO. 2.4ml | 10 Disposable Palette |
| 16 Opaque O-A1–D4 2.4ml | 1 Mixing Pad |
| 5 Opaque Dentine | 10 Brush Round, Size 1 |
| OD-32, 37, 41, 43, 44. . . 2.9ml | 10 Brush Flat, Size 1 |
| 16 Dentine D-A1–D4 2.9ml | 2 Brush Holder |
| 4 Enamel E-57–60 2.9ml | 1 Brush No. 7 |
| 1 Separator 5ml | 2 Syringe Plunger |
| 1 Diamond Polisher 8g | 3 Instructions for use |
| 1 Air Protect 10ml | 1 Creation VC Workbook |
| 1 Composite Primer 3ml | |

VC Kit 2 | 820202

Effect porcelains kit

A colour system, a layering concept and a ceramic-like feeling:

The extension set offers dental technicians a wide spectrum for creating a natural look, using a variety of opalescent and translucent porcelains – even for very thin layer thicknesses. The **Flow porcelains** are a real highlight. With its unique filler technology, this fluid composite shows an extremely homogeneous distribution of ultra-fine particles within the matrix. The filler bonds perfectly to the matrix, guaranteeing a very high bonding strength. The excellent polishing qualities ensure that when this almost self-polishing material is used for long-term restorations, it will give off a shine that remains for a considerable period of time. The flow materials are outstandingly suited for bonding with the Creopal Shells, and promise a durable bond with stable colouring, thanks to the latest generation of primer (VC Composite Primer). Producing restorations in the injection technique as well as the classical layering of veneers and tabletops are only some of the possibilities for the universal use of the Flow porcelains.



- | | |
|------------------------------------|----------------------------------|
| 2 Pearl Enamel PS-1, 2 . . . 2.9ml | 2 Flow Opaque Dentine |
| 3 Effect Enamel SI-01–03. 2.9ml | OD-A2, A3. 2ml |
| 4 Transpa | 2 Flow Enamel EN-L, T . . . 2ml |
| TI-01, 02, 04, 05 2.9ml | 1 Composite Primer 3ml |
| 3 Neck Transpa | 20 Dispensing Tips |
| HT-52–54. 2.9ml | 2 Syringe Plunger |
| 9 Flow Dentine | 3 Instructions for use |
| BW, A1–3,5, B1–3, HT. . . 2ml | |

VC Kit 1 Starter | 820206

Introduction kit in the 5 most common base shades A2, A3, A3.5, B2, B3

Besides 5 opaques, 3 opaque dentines and 5 standard dentines in high density colours, dental technicians also have 3 assigned incisal materials at their disposal for individual aesthetics. In addition, the set contains a variety of accessories and the Composite Primer.



- | | |
|----------------------------------|----------------------------------|
| 1 Base Opaque O-BO . . . 2.4ml | 1 Air Protect 10ml |
| 1 Cervical Opaque O-CO. 2.4ml | 1 Composite Primer 3ml |
| 5 Opaque | 10 Disposable Palette |
| O-A2–A3.5, B2, B3 . . . 2.4ml | 1 Mixing Pad |
| 3 Opaque Dentine | 10 Brush Round, Size 1 |
| OD-32, 37, 43 2.9ml | 10 Brush Flat, Size 1 |
| 5 Dentine | 2 Brush Holder |
| D-A2–A3,5, B2, B3 . . . 2.9ml | 1 Brush No. 7 |
| 3 Enamel E-57–59 2.9ml | 2 Syringe Plunger |
| 1 Separator 5ml | 3 Instructions for use |
| 1 Diamond Polisher 8g | 1 Creation VC Workbook |

VC Kit 2 Starter | 820207

Effect porcelains introduction kit

A colour system, a layering concept and a ceramic-like feeling with a reduced selection of the most common shades – based on kit 1. Can be completed according to the requirements. The set offers dental technicians a wide spectrum for creating a natural look, using a variety of opalescent and translucent porcelains – even for very thin layer thicknesses. The **Flow porcelains** are a real highlight.



- | | |
|-----------------------------------|----------------------------------|
| 3 Effect Enamel SI-01–03. 2.9ml | 2 Flow Opaque Dentine |
| 4 Transpa | OD-A2, A3. 2ml |
| TI-01, 02, 04, 05 2.9ml | 1 Flow Enamel EN-L 2ml |
| 3 Neck Transpa | 1 Composite Primer 3ml |
| HT-52–54. 2.9ml | 20 Dispensing Tips |
| 6 Flow Dentine | 2 Syringe Plunger |
| A2–3,5, B2–3, HT 2ml | 3 Instructions for use |

VC Gingiva Kit | 820203
Complete gingiva colours and primers

Livelier red aesthetics:

The gingiva colours kit makes it easy to reproduce all areas of the gum, with a completely natural look. The porcelains are available in three viscosities (liquid, paste and gel) – for a homogeneous foundation, simple processing, mixing, and very thin layer thicknesses! The liquid opaque's greatest qualities are its extraordinary covering ability and ease of use. The paste VC gingiva materials can be used individually, mixed or in combination with other shades, while the gel modifiers are ideal for small space ratios and thin layer thicknesses, due to their viscosity.



- | | |
|--|---|
| 4 Gingiva Opaque
O-G3-6 2.4 ml | 1 Gingiva Translucent
GT light-pink 2.4 ml |
| 4 Gingiva G3-6 2.9 ml | 1 Metal Primer 5 ml |
| 6 Gingiva Modifier
GM-1-3, 5-7 2.4 ml | 1 Composite Primer 3 ml |
| | 20 Dispensing Tips |
| | 2 Syringe Plunger |
| | 3 Instructions for use |



created by Uwe Gehringer, Oral Design

VC Make up Neo Kit | 820204
Universal stains

Amazingly simple and varied:

The fine-grained, nano-filled stains and modifiers allow simple and efficient colouring, for both internal and external (transparent) characterisation of the layer structures. The high-quality VC Make up Neo porcelains are also well-suited for the palatal modification of Creopal denture teeth and shells, for greater efficiency and versatility. The special nano-filler technology helps to guarantee a perfect particle distribution, resulting in a very high resistance to abrasion and colour retention – even with thin layer thicknesses. In many cases, mechanical polishing can be omitted or clearly shortened. The two translucent gel materials, Translucent h.v. (high viscosity) and l.v. (low viscosity), are suitable for mixing with the Neo colours for internal characterisation.



- | | |
|--|---------------------------------------|
| 3 Make up Neo
MUN-A-C 2.6 ml | 2 Translucent h.v., l.v. . . . 2.4 ml |
| 12 Make up Neo
MUN-1-4, 7-12, IL, G. . 2.6 ml | 10 Brush Round, Size 1 |
| 2 Make up Neo
MUN-CL, MUN-CL h.c. . 5 ml | 10 Brush Flat, Size 1 |
| | 2 Brush Holder |
| | 2 Instructions for use |

VC Trial Kit A2 | 820208
The easy introduction of the system

A colour system, a layering concept and a ceramic-like feeling with a reduced selection – matched to the most common shade A2. The high-quality 1-shade set offers dental technicians a wide spectrum for creating a natural look – even for very thin layer thicknesses. The **Flow porcelains** are a real highlight – also in combination with Creopal- and Creopal Shell-denture teeth.



- | | |
|---|-----------------------------------|
| 1 Base Opaque O-BO. . . 2.4 ml | 1 Flow Enamel EN-L 2.9 ml |
| 1 Cervical Opaque
O-CO. 2.4 ml | 1 Separator 5 ml |
| 1 Opaque O-A2 2.4 ml | 1 Diamond Polisher 8 g |
| 1 Opaque Dentine
OD-32 2.9 ml | 1 Air Protect 10 ml |
| 1 Dentine D-A2 2.9 ml | 1 Composite Primer 3 ml |
| 1 Enamel E-58 2.9 ml | 1 Mixing Pad |
| 1 Make up Neo MUN-2 . . 2.6 ml | 20 Dispensing Tips |
| 1 Flow Dentine A2 2 ml | 2 Syringe Plunger |
| 1 Flow Opaque Dentine
OD-A2 2 ml | 4 Instructions for use |
| | 1 Creation VC Workbook |

VC Accessory Kit | 820205
Accessories and primers

Brushes, polishing paste or a specific primer: this kit has the right accessory for every laboratory table and indication.



- | | |
|----------------------------------|------------------------|
| 2 Syringe Plunger | 10 Disposable Palette |
| 1 Separator 5ml | 10 Brush Round, Size 1 |
| 1 Diamond Polisher 8g | 10 Brush Flat, Size 1 |
| 1 Air Protect 10ml | 1 Brush No. 7 |
| 1 Composite Primer 3ml | 2 Brush Holder |
| 1 Metal Primer 5ml | 1 Mixing Pad |
| 1 Ceramic Primer 3ml | 4 Instructions for use |

VC Single Products and Bonding Agents

The right tools for a strong bond to different materials, or a long-lasting shine.



VC Metal Primer | 820154

Ensures secure bonding between the framework and the first opaque layer (VC Base Opaque).

VC Ceramic Primer | 820156

This primer's special composition makes it an important part of the adhesive bond to the first opaque layer, and subsequently, the composite bond.

VC Composite Primer | 820155

Light-curing primer for recreating the inhibition layer (reaction layer). Builds the bond from already polymerised material to material which has not yet been polymerised.



VC Separator | 820151

Composite-plaster insulation used with the working plaster model for direct contact with the composite.

VC Air Protect | 820153

Acid blocker which protects the inhibition layer after polymerisation, in order to maintain the surface structure. This guarantees complete polymerisation of the surface.

VC Diamond Polisher | 820152

Extremely fine-grained diamond polishing paste which quickly and efficiently creates a controlled shine.

The color chart is organized into several sections:

- DENTINE:** A1, A2, A3, A3,5, A4, B1, B2, B3, B4, C1, C2, C3, C4, D2, D3, D4.
- ENAMEL:** E-57, E-58, E-59, E-60.
- TRANSPA:** TI-01 (blue), TI-02 (white), TI-04 (yellow), TI-05 (grey).
- EFFECT ENAMEL:** SI-01 (light yellow), SI-02 (medium yellow), SI-03 (heavy yellow).
- PEARL ENAMEL:** PS-1 (blue), PS-2 (flamingo).
- NECK TRANSPA HIGH FLUORESCENT:** HT-52 (khaki), HT-53 (sand), HT-54 (honey).
- OPAQUE DENTINE:** O-BO (Base Opaque), O-CO (Cervical Opaque), OD-32 (havanna), OD-37 (curry), OD-41 (orange), OD-43 (ivory), OD-44 (cuba), Translucent Gel light pink.
- GINGIVA:** G3 (light pink), G4 (flamingo), G5 (rose), G6 (dark pink opaque).
- GINGIVA MODIFIER:** GM1 (purple), GM2 (dark pink), GM3 (light pink), GM5 (rose), GM6 (dark pink opaque), GM7 (violet).
- GINGIVA OPAQUE:** O-G3 (light pink), O-G4 (flamingo), O-G5 (rose), O-G6 (dark pink).
- FLOW DENTINE:** FD-BW, FD-A1, FD-A2, FD-A3, FD-A3,5, FD-B1, FD-B2, FD-B3, FD-HT, OD-A2, OD-A3, EN-L, EN-T.
- MAKE UP NEO:** MUN-1 (white), MUN-2 (eggshell), MUN-3 (lemon yellow), MUN-4 (mandarine), MUN-7 (light brown), MUN-8 (medium brown), MUN-9 (olive), MUN-10 (red), MUN-11 (blue), MUN-12 (grey).
- Other shades:** MUN-A (stain A), MUN-B (stain B), MUN-C (stain C), MUN-IL (Illusion), MUN-G (Gingiva), MUN-CL (clear), MUN-CL (h.c.), Translucent h.v., Translucent l.v.

Shades A1–D4 are referring to the Vita® Shade Guide. Vita® is a registered trademark of VITA Zahnfabrik H. Rauter GmbH & Co. KG, Bad Säckingen, Germany.

DENTURE TEETH

“Without any loss of aesthetics, the natural, slightly rectangular tooth shapes can perfectly be individualised and combined also due to the skilfully arranged interdental closing ridges.

My conclusion: Creopal teeth and shells are economic and aesthetic down to the smallest detail.”

Michael Zangl



CREOPAL COMPOSITE TEETH AND SHELLS – exclusive range of denture teeth: multifaceted play of colour and shape

High aesthetics, stability and efficiency: Creopal is a modern system of composite teeth with enhanced strength – the result of intercultural exchange. Thus the gnathology and the surface texture of the anterior teeth were designed in a Willi Geller project lasting several years, while the posterior teeth were developed in parallel by Yasuhiro Odanaka, among others.

The **ten anterior and five posterior tooth shapes** for the maxilla and mandibula are perfectly coordinated with each other. Particularly impressive features are their natural morphology and surface texture as well as an extraordinary gloss. As a result of the balanced filler content, the highly compacted composite teeth display high abrasion and flexural strength.

The exclusive range of artificial teeth also includes multifunctional **composite shells for the anterior and posterior area**. These Creopal Shells, despite their extremely thin layer thickness,

achieve the same colour effect and the same brightness value as full contour teeth – creating a masterful impact!

Individually adaptable and multiple indications: The Creopal system is available in 16 Vita® and two bleach shades, for perfect colour adaptation with acrylic and ceramic materials, the Creopal Shell system has a limited colour range. The artificial teeth produced by a four-layer process and the Creopal Shells with a two-layer method, are suitable for partial, combination and implant restorations as well as full dentures and as a set-up or mock-up for aesthetic try-ins and backward planning. The slightly rectangular tooth shapes can be perfectly individualised and combined – without any loss of aesthetics – best with Creation VC!

Creopal teeth and shells – for individual tooth aesthetics.

THE BRILLIANCE OF CREOPAL AND CREOPAL SHELL:

- System-independent, lifelike denture teeth and veneer shells made from composite
- Tooth shapes with enhanced opalescence and fluorescence – for more light dynamics
- Rectangular basic forms can easily be individualised without loss of colour
- Closed interdental spaces for a natural set-up and papilla shaping
- Universal indications in temporary restorations, partial and full dentures

CREOPAL: SHELL AND FULL CONTOUR

shell anterior	X	X	X	X	-		X	X	X	-		-	-	-	-	-	-	-	X		
shell posterior	X	X	X	X	-		X	X	X	-		-	-	-	-	-	-	-	-		
full anterior	X	X	X	X	X		X	X	X	X		X	X	X	X		X	X	X	X	
full posterior	X	X	X	X	X		X	X	X	X		X	X	X	X		X	X	X	-	-



Creopal Anterior

Fully anatomical composite anterior tooth.

Single sets, shapes and shades

Creopal upper jaw anterior teeth AU, 6-piece 1 set
6 shapes,
16 tooth shades A1–D4 and 2 bleach shades FW2, FW5

Creopal lower jaw anterior teeth AL, 6-piece 1 set
4 shapes,
16 tooth shades A1–D4 and 2 bleach shades FW2, FW5



Creopal Posterior

Fully anatomical composite posterior tooth.

Single sets, shapes and shades

Creopal upper jaw posterior teeth PU, 8-piece 1 set
4 shapes, 16 tooth shades A1–D4

Creopal lower jaw posterior teeth PL, 8-piece 1 set
4 shapes, 16 tooth shades A1–D4



Creopal Shell Anterior

Veneer composite anterior tooth.

Single sets, shapes and shades

Creopal Shell upper jaw anterior teeth SAU 6-piece 1 set
4 shapes,
7 tooth shades A1–3.5, B1–3 and 1 bleach shade FW5

Creopal Shell lower jaw anterior teeth SAL, 6-piece 1 set
3 shapes,
7 tooth shades A1–3.5, B1–3 and 1 bleach shade FW5



Creopal Shell Posterior

Veneer composite posterior tooth.

Single sets, shapes and shades

Creopal Shell upper jaw posterior teeth SPU, 8-piece 1 set
4 shapes, 7 tooth shades A1–3.5, B1–3

Creopal Shell lower jaw posterior teeth SPL, 8-piece 1 set
4 shapes, 7 tooth shades A1–3.5, B1–3

Creation Tooth Cabinet

The tooth cabinet with five drawers offers enough space for up to 300 sets (60 anterior sets or 40 posterior sets per inlay). The drawer bases are made of anodised, black moulded sheet metal parts, and can be opened by lightly touching the front. Each drawer is fitted with a acrylic glass insertion plate at the front for individual labelling. Tooth cabinet without inlays and sets. 6-piece and 8-piece inlays are available individually.
Dimensions: 44.5 x 39.8 x 19.5 cm

Creation Tooth Cabinet | 1000300030

Assortment inlay for 72 anterior sets | PEARL00003

Assortment inlay for 48 posterior sets | PEARL00004



50 Creopal Denture Teeth



Creopal Denture Tooth Presentation Boxes

High-value aluminium chests with 33 sets in all shapes and Creopal primer.

- Creopal Presentation Box A1 | 1100000011
- Creopal Presentation Box A2 | 1100000012
- Creopal Presentation Box A3 | 1100000013
- Creopal Presentation Box A3.5 | 1100000014
- Creopal Presentation Box B2 | 1100000017
- Creopal Presentation Box B3 | 1100000018



Creopal Shade Guide

Tooth shade guide with 16 tooth shades A1–D4 and 2 bleach shades FW2 and FW5.

Creopal Shade Guide | 1100000001



Creopal Primer

Bonding agent for a secure bond between prosthetic tooth and prosthetic resin.

Creopal Primer | 1200000001



Type AU – upper anterior



Type AL – lower anterior



Contact Relationship in Statics

Flat intercuspation

Calotte: 140
Can readily be used in a combination technique and complete prosthetics due to the anatomical shape and the cusp inclination.





**CREAPEARL 2 PMMA TEETH –
cosmetic dentistry that works functional and looks natural**

Simply because being natural matters: the most fascinating characteristic of the Creapearl 2 anterior and posterior teeth is not only their brilliant aesthetics, but also their universal function. This means that the maximum demand for individuality can be reached. Minimal grinding on the body of the tooth also makes it easier to adjust the form of the tooth.

Thanks to the elaborate manufacturing process, high-value materials and a particularly strong dentine core, this range of anterior and posterior teeth, independent of any system, guarantees dental technicians **prosthetic teeth that are 100% true to their colour, shape and function** – adapted to the Vita® shade system.

Creapearl 2 Anterior

The lively colour effect of the Creapearl 2 Anterior makes it a classic anterior tooth with a wide variety of shapes. Its other distinguishing features are its **almost natural layering** with increased opalescence, fluorescence and translucence, and its lifelike surface structure.

Creapearl 2 Posterior

The posterior tooth has a **high level of abrasion resistance** and increased vertical stability and resilience – for a long life and resistance to plaque. Its **natural surface morphology** also makes it feel comfortable in the mouth.

The basic concept of the Creapearl 2 tooth range involves the reproduction of a natural tooth's function and character, using strengthened PMMA resin. The form follows the function, bringing the **fundamental principles of Creation** into effect:

- Raised opacity
- Chromatic dentine
- Opalescent glaze coating
- Individual high-contrast layering (coloured/white, opaque/translucent)

When the form and surface texture of the Creapearl 2 anterior teeth was conceived by master of ceramics Willi Geller, the MDT Dieter Schulz came up with the concept for the posterior teeth, using the occlusal compass and drawing on his great experience in NAT/NFR recovery technology. Thanks to this easy-to-understand positioning concept and the **multi-functional occlusal surface design** (with free spaces in the occlusion), all types of position and biting situations can be implemented.

Creapearl 2: natural and functional across all our designs!

**THE BRILLIANCE OF
CREAPEARL 2:**

- **Anterior and posterior tooth range with perfect colouring and function**
- **Dynamic colour penetration for a reduction without colour wearing away**
- **Closed approximal areas for a vital red/white aesthetic ("Geller Wing")**
- **More expressive and natural structure of the occlusal surface relief**
- **Outstanding resistance to wear and tear**
- **Strong, characteristic tooth shape – can be used by anyone, for anyone, and adapted to suit the individual**

CREAPEARL 2

anterior	X	X	X	X	X		X	X	X	X		X	X	X	X		X	X	X
posterior	X	X	X	X	X		X	X	X	X		X	X	X	X		X	X	X



Creation Tooth Cabinet

The tooth cabinet with five drawers offers enough space for up to 300 sets (60 anterior sets or 40 posterior sets per inlay). The drawer bases are made of anodised, black moulded sheet metal parts, and can be opened by lightly touching the front. Each drawer is fitted with a acrylic glass insertion plate at the front for individual labelling. Tooth cabinet without inlays and sets. 6-piece and 8-piece inlays are available individually. Dimensions: 44.5 x 39.8 x 19.5 cm

Creation Tooth Cabinet | 1000300030

Assortment inlay for 72 anterior sets | PEARL00003
Assortment inlay for 48 posterior sets | PEARL00004



Creapearl 2 Denture Tooth Presentation Boxes
High-value aluminium chests with 33 sets in all shapes.

- Creapearl 2 Presentation Box A1 | 1000300011
- Creapearl 2 Presentation Box A2 | 1000300012
- Creapearl 2 Presentation Box A3 | 1000300013
- Creapearl 2 Presentation Box A3.5 | 1000300014



Creapearl 2 Shade Guide
Tooth shade guide with 16 tooth shades A1–D4.

Creapearl 2 Shade Guide | 1000300009



Creapearl 2 Anterior
Fully anatomical anterior tooth made from strengthened PMMA resin.

Single sets, shapes and shades
Creapearl 2 upper jaw anterior teeth A and V, 6-piece 1 set
10 shapes, 16 tooth shades A1–D4

Creapearl 2 lower jaw anterior teeth U, 6-piece 1 set
5 shapes, 16 tooth shades A1–D4



Creapearl 2 Posterior
Fully anatomical posterior tooth made from strengthened PMMA resin.

Single sets, shapes and shades
Creapearl 2 upper jaw posterior teeth D, E, F, G, 8-piece . . 1 set
9 shapes, 16 tooth shades A1–D4

Creapearl 2 lower jaw posterior teeth D, E, F, G, 8-piece . . 1 set
9 shapes, 16 tooth shades A1–D4

Technical specifications	Dynamicline (D)	Balanceline (E, F)	Gnathosline (G)
Dimensions	S, M, L	S, M	S, M
Morphology	Constructional morphology (NAT)	Extended functional morphology (NFR)	Natural shape and cusp inclination

Constructional morphology (NAT), extended functional morphology (NFR), MDT Dieter Schulz



Typee A Anatomic – upper anterior teeth with natural root-shaped emergence profile
The denture tooth is a perfect anatomical copy of a natural tooth.



Typee V Vario – upper anterior teeth for individual contouring
The clinical tooth crown can be modified for an individual appearance, with or without grinding down the tooth neck, thanks to the model of the gingival edge.



Typee U – lower anterior teeth
Can be arranged in the same way as Typee V Vario, without affecting the anatomical circumstances. In this way, the length of the tooth itself can be determined.



Dynamicline
Calotte: 140
Condyle inclination (HCN) FH 45° / CE 30°
Bennett angle 10°, ISS 0.5mm
Lateroretrusion (LRT) 20°
Retrusion (RT) 0.5mm



Balanceline E
Calotte: 140
Condyle inclination (HCN) FH 30° / CE 15°
Bennett angle 10°, ISS 1.0mm
Lateroretrusion (LRT) 20°
Retrusion (RT) 1.0mm



Balanceline F
Basal reduced
Calotte: 140
Condyle inclination (HCN) FH 30° / CE 15°
Bennett angle 10°, ISS 1.0mm
Lateroretrusion (LRT) 20°
Retrusion (RT) 1.0mm



Gnathosline G / Willi Geller
Calotte: 140
Due to the natural shape and the cusp inclination, the denture teeth can be used for partial, combined and full denture restorations.



WILLI GELLER
Creation
SIMPLY BRILLIANT

Creapearl 2

WILLI GELLER
Creation
SIMPLY BRILLIANT

CONTENT

CREATION CERAMICS AND ACCESSORIES

All kits at a glance	59
CC - Classic Metal Ceramic	60
ZI-CT - Zirconium Dioxide Ceramic	69
ZI-F - Low-Fusing Zirconium Dioxide Ceramic	73
LS/LS Press - Lithium Disilicate Veneering and Pressable Ceramic	77
Magic Colour – Colour System	79
CreaColor – Stains and Modifier	80
Creation Liquids	81
Ceramic Accessories	81
Creation Shade Guides	82
Aqualine	83

CREATION COMPOSITE

VC - Light-Curing Composite	84
-----------------------------------	----

CREATION DENTURE TEETH

Creopal	88
Creapearl 2	98

Printing errors excepted. Subject to change at any time. The general terms and conditions of Creation Willi Geller International GmbH apply (www.creation-willigeller.com)

Shades A1–D4 are referring to the Vita® Shade Guide. Vita® is a registered trademark of VITA Zahnfabrik H. Rauter GmbH & Co. KG, Bad Säckingen, Germany.

Article no.	Article name	Content
CERAMIC		
000300	CC/Kit Creapast	1 Kit
000800	CC/Powder Opaque Kit (inkl. Shade Guide 000068)	1 Kit
000804	CC/Kit 1 804 (inkl. Shade Guide 000064)	1 Kit
001508	CC/Kit 2 1508 (inkl. Shade Guide 000073)	1 Kit
000915	CC/Starter Kit	1 Kit
000920	CC/Introduction Kit	1 Kit
001590	CC/Gingiva Kit (inkl. Shade Guide 000048)	1 Kit
000250	CC/Bleach Shades Kit (inkl. Shade Guide 000049)	1 Kit
001503	CC/Shoulder Kit (inkl. Shade Guide 000047)	1 Kit
000801	CC/Kit 1 Transition Dentine (inkl. Shade Guide 000087)	1 Kit
ZI-CT		
620501	ZI-CT/Kit 1	1 Kit
620502	ZI-CT/Kit 2	1 Kit
620503	ZI-CT/Starter Kit	1 Kit
620506	ZI-CT/Introduction Kit	1 Kit
620504	ZI-CT/Gingiva Kit	1 Kit
620505	ZI-CT/Bleach Kit	1 Kit
620507	ZI-CT/Shoulder Kit	1 Kit
ZI-F		
653010	ZI-F/Kit 1 (inkl. Shade Guide 000076)	1 Kit
653015	ZI-F/Kit 2 (inkl. Shade Guide 000077)	1 Kit
653025	ZI-F/Starter Kit	1 Kit
653030	ZI-F/Introduction Kit	1 Kit
603030	ZI-F/Gingiva Kit (inkl. Shade Guide 000048)	1 Kit
652050	ZI-F/Bleach Shades Kit (inkl. Shade Guide 000049)	1 Kit
LS Press		
830080	LS Press / Starter Kit	1 Kit
830081	LS Press / Introduction Kit A1, A2	1 Kit
830082	LS Press / Introduction Kit A3	1 Kit
830083	LS/Kit	1 Kit
Magic Colour		
001205	Magic Colour Professional Kit	1 Kit
001206	Magic Colour Starter Kit ZI-F	1 Kit
001207	Magic Colour Starter Kit LS	1 Kit
CreaColor		
001200	CreaColor Kit	1 Kit
Make up Neo		
001100	Make up Neo Kit	1 Kit
001150	In Nova Neo Kit	1 Kit
COMPOSITE		
820201	VC/Kit 1	1 Kit
820202	VC/Kit 2	1 Kit
820203	VC/Gingiva Kit	1 Kit
820204	VC/Make up Neo Kit	1 Kit
820205	VC/Accessory-Kit	1 Kit
820206	VC/Kit 1 Starter	1 Kit
820207	VC/Kit 2 Starter	1 Kit
820208	VC/Trial Kit	1 Kit



CREATION CC | CLASSIC METAL CERAMIC

Article no.	Article name	Content
	PASTES 3g – 18g	
000080	CC.LF/Crea Alloy Bond	2 x 4 g
000301	CC/Creapast A1	3 g
000302	CC/Creapast A2	3 g
000303	CC/Creapast A3	3 g
000304	CC/Creapast A3,5	3 g
000305	CC/Creapast A4	3 g
000306	CC/Creapast B1	3 g
000307	CC/Creapast B2	3 g
000308	CC/Creapast B3	3 g
000309	CC/Creapast B4	3 g
000310	CC/Creapast C1	3 g
000311	CC/Creapast C2	3 g
000312	CC/Creapast C3	3 g
000313	CC/Creapast C4	3 g
000314	CC/Creapast D2	3 g
000315	CC/Creapast D3	3 g
000316	CC/Creapast D4	3 g
000317	CC/Creapast IO white	3 g
000318	CC/Creapast IO violet	3 g
000319	CC/Creapast IO ochre	3 g
000320	CC/Creapast IO gold yellow	3 g
000322	CC/Creapast WOP sand	3 g
000323	CC/Creapast WOP sahara	3 g
000324	CC/Creapast WOP gold	3 g
000325	CC/Creapast G gingiva	3 g
000326	CC/Bleach Creapast O-AB	3 g
006301	CC/Creapast A1	18 g
006302	CC/Creapast A2	18 g
006303	CC/Creapast A3	18 g
006304	CC/Creapast A3,5	18 g
006305	CC/Creapast A4	18 g
006306	CC/Creapast B1	18 g
006307	CC/Creapast B2	18 g
006308	CC/Creapast B3	18 g
006309	CC/Creapast B4	18 g
006310	CC/Creapast C1	18 g
006311	CC/Creapast C2	18 g
006312	CC/Creapast C3	18 g
006313	CC/Creapast C4	18 g
006314	CC/Creapast D2	18 g
006315	CC/Creapast D3	18 g
006316	CC/Creapast D4	18 g
006317	CC/Creapast IO white	18 g
006318	CC/Creapast IO violet	18 g
006319	CC/Creapast IO ochre	18 g
006320	CC/Creapast IO gold yellow	18 g
006322	CC/Creapast WOP sand	18 g

CREATION CC | CLASSIC METAL CERAMIC

Article no.	Article name	Content
006323	CC/Creapast WOP sahara	18 g
006324	CC/Creapast WOP gold	18 g
006325	CC/Creapast G gingiva	18 g
006326	CC/Bleach Creapast O-AB	18 g
	PORCELAIN 10g – 15g	
000174	CC/Glaze GL	10 g
001511	CC/Opaque Modifier OM-11 white	15 g
001512	CC/Opaque Modifier OM-12 pink	15 g
001513	CC/Opaque Modifier OM-13 lilac	15 g
001514	CC/Opaque Modifier OM-14 grey	15 g
001515	CC/Opaque Modifier OM-15 sahara	15 g
001516	CC/Opaque Modifier OM-16 ocker	15 g
001517	CC/Opaque Modifier OM-17 brown	15 g
001518	CC/Opaque Modifier OM-G gingiva	15 g
001521	CC/Shoulder SP-21 neutral	15 g
001522	CC/Shoulder SP-22 flamingo	15 g
001523	CC/Shoulder SP-23 sand	15 g
001524	CC/Shoulder SP-24 gold	15 g
001525	CC/Shoulder SP-25 red brown	15 g
001526	CC/Shoulder SP-26 yellow grey	15 g
001527	CC/Shoulder SP-27 ivory	15 g
001528	CC/Shoulder SP-28 opaque yellow	15 g
001529	CC/Shoulder SP-29 honey	15 g
001530	CC/Shoulder SP-G gingiva	15 g
000256	CC/Bleach Shoulder SP-AB	15 g
001532	CC/Opaque Dentine OD-32 (A2-A3)	15 g
001537	CC/Opaque Dentine OD-37 (B4)	15 g
001541	CC/Opaque Dentine OD-41 (D3)	15 g
001543	CC/Opaque Dentine OD-43 (ivory)	15 g
001544	CC/Opaque Dentine OD-44 (cuba)	15 g
001551	CC/Neck Transpa HT-51 iridescent	15 g
001552	CC/Neck Transpa HT-52 khaki	15 g
001553	CC/Neck Transpa HT-53 sand	15 g
001554	CC/Neck Transpa HT-54 honey	15 g
001555	CC/Neck Transpa HT-55 bordeaux	15 g
001556	CC/Neck Transpa HT-56 ochre	15 g
001561	CC/Make In MI-61 ivory	15 g
001562	CC/Make In MI-62 lemon	15 g
001563	CC/Make In MI-63 honey	15 g
001564	CC/Make In MI-64 flamingo	15 g
001565	CC/Make In MI-65 gold	15 g
001566	CC/Make In MI-66 olive	15 g
001568	CC/Approximal Dentine AD-1 light yellow	15 g
001569	CC/Approximal Dentine AD-2 orange	15 g
001570	CC/Opaque Dentine OD-A1	15 g
001571	CC/Opaque Dentine OD-A2	15 g
001572	CC/Opaque Dentine OD-A3	15 g

Article no.	Article name	Content
001573	CC/Opaque Dentine OD-A3,5	15 g
001574	CC/Opaque Dentine OD-A4	15 g
001575	CC/Opaque Dentine OD-B1	15 g
001576	CC/Opaque Dentine OD-B2	15 g
001577	CC/Opaque Dentine OD-B3	15 g
001578	CC/Opaque Dentine OD-B4	15 g
001579	CC/Opaque Dentine OD-C1	15 g
001580	CC/Opaque Dentine OD-C2	15 g
001581	CC/Opaque Dentine OD-C3	15 g
001582	CC/Opaque Dentine OD-C4	15 g
001583	CC/Opaque Dentine OD-D2	15 g
001584	CC/Opaque Dentine OD-D3	15 g
001585	CC/Opaque Dentine OD-D4	15 g
001591	CC/Gingiva G1 purple	15 g
001592	CC/Gingiva G2 dark pink	15 g
001593	CC/Gingiva G3 light pink	15 g
001594	CC/Gingiva G4 flamingo	15 g
001595	CC/Gingiva G5 rose	15 g
001596	CC/Gingiva G6 dark pink opaque	15 g
001597	CC/Gingiva GN neutral	15 g
001598	CC/Gingiva G7 violet	15 g
	PORCELAIN 20 g	
000201	CC/Opaque O-A1	20 g
000202	CC/Opaque O-A2	20 g
000203	CC/Opaque O-A3	20 g
000204	CC/Opaque O-A3,5	20 g
000205	CC/Opaque O-A4	20 g
000206	CC/Opaque O-B1	20 g
000207	CC/Opaque O-B2	20 g
000208	CC/Opaque O-B3	20 g
000209	CC/Opaque O-B4	20 g
000210	CC/Opaque O-C1	20 g
000211	CC/Opaque O-C2	20 g
000212	CC/Opaque O-C3	20 g
000213	CC/Opaque O-C4	20 g
000214	CC/Opaque O-D2	20 g
000215	CC/Opaque O-D3	20 g
000216	CC/Opaque O-D4	20 g
000217	CC/Opaque FOP	20 g
000231	CC/Dentine D-A1	20 g
000232	CC/Dentine D-A2	20 g
000233	CC/Dentine D-A3	20 g
000234	CC/Dentine D-A3,5	20 g
000235	CC/Dentine D-A4	20 g
000236	CC/Dentine D-B1	20 g
000237	CC/Dentine D-B2	20 g
000238	CC/Dentine D-B3	20 g

Article no.	Article name	Content
000239	CC/Dentine D-B4	20 g
000240	CC/Dentine D-C1	20 g
000241	CC/Dentine D-C2	20 g
000242	CC/Dentine D-C3	20 g
000243	CC/Dentine D-C4	20 g
000244	CC/Dentine D-D2	20 g
000245	CC/Dentine D-D3	20 g
000246	CC/Dentine D-D4	20 g
000247	CC/Dentine D-CW California white	20 g
000251	CC/Bleach Opaque O-AB	20 g
000252	CC/Bleach Dentine BD-A	20 g
000253	CC/Bleach Dentine BD-B	20 g
000254	CC/Bleach Dentine BD-B0	20 g
000255	CC/Bleach Enamel S-AB	20 g
000261	CC/Enamel S-057	20 g
000262	CC/Enamel S-058	20 g
000263	CC/Enamel S-059	20 g
000264	CC/Enamel S-060	20 g
000265	CC/Effect Enamel SI-01 light yellow	20 g
000266	CC/Effect Enamel SI-02 medium yellow	20 g
000267	CC/Effect Enamel SI-03 heavy yellow	20 g
000268	CC/Effect Enamel SI-04 light orange	20 g
000269	CC/Effect Enamel SI-05 medium orange	20 g
000270	CC/Effect Enamel SI-06 heavy orange	20 g
000271	CC/Window UC	20 g
000272	CC/Transpa NT neutral	20 g
000273	CC/Clear CL-O	20 g
000274	CC/Glaze GL	20 g
000287	CC/Transpa OT+	20 g
000288	CC/Transpa Geller-Mix	20 g
000275	CC/Transpa OT opal	20 g
000276	CC/Transpa TI-1 blue	20 g
000277	CC/Transpa TI-2 white	20 g
000278	CC/Transpa TI-3 pink	20 g
000279	CC/Transpa TI-4 yellow	20 g
000280	CC/Transpa TI-5 grey	20 g
000281	CC/Pearl Enamel PS-0 white	20 g
000282	CC/Pearl Enamel PS-1 blue/white	20 g
000283	CC/Pearl Enamel PS-2 flamingo	20 g
000284	CC/Pearl Enamel PS-3 orange	20 g
000285	CC/Effect Enamel SO-10 blue	20 g
000286	CC/Effect Enamel SO-11 orange	20 g
000290	CC/Correction Powder KM	20 g
003201	CC/Transition Dentine TD-A1	20 g
003202	CC/Transition Dentine TD-A2	20 g
003203	CC/Transition Dentine TD-A3	20 g
003204	CC/Transition Dentine TD-A3,5	20 g
003205	CC/Transition Dentine TD-A4	20 g



Article no.	Article name	Content
003206	CC/Transition Dentine TD-B1	20 g
003207	CC/Transition Dentine TD-B2	20 g
003208	CC/Transition Dentine TD-B3	20 g
003209	CC/Transition Dentine TD-B4	20 g
003210	CC/Transition Dentine TD-C1	20 g
003211	CC/Transition Dentine TD-C2	20 g
003212	CC/Transition Dentine TD-C3	20 g
003213	CC/Transition Dentine TD-C4	20 g
003214	CC/Transition Dentine TD-D2	20 g
003215	CC/Transition Dentine TD-D3	20 g
003216	CC/Transition Dentine TD-D4	20 g
003217	CC/Transition Dentine TD-BA	20 g
	PORCELAIN 50 g	
000501	CC/Opaque O-A1	50 g
000502	CC/Opaque O-A2	50 g
000503	CC/Opaque O-A3	50 g
000504	CC/Opaque O-A3,5	50 g
000505	CC/Opaque O-A4	50 g
000506	CC/Opaque O-B1	50 g
000507	CC/Opaque O-B2	50 g
000508	CC/Opaque O-B3	50 g
000509	CC/Opaque O-B4	50 g
000510	CC/Opaque O-C1	50 g
000511	CC/Opaque O-C2	50 g
000512	CC/Opaque O-C3	50 g
000513	CC/Opaque O-C4	50 g
000514	CC/Opaque O-D2	50 g
000515	CC/Opaque O-D3	50 g
000516	CC/Opaque O-D4	50 g
000517	CC/Opaque O-FOP	50 g
000531	CC/Dentine D-A1	50 g
000532	CC/Dentine D-A2	50 g
000533	CC/Dentine D-A3	50 g
000534	CC/Dentine D-A3,5	50 g
000535	CC/Dentine D-A4	50 g
000536	CC/Dentine D-B1	50 g
000537	CC/Dentine D-B2	50 g
000538	CC/Dentine D-B3	50 g
000539	CC/Dentine D-B4	50 g
000540	CC/Dentine D-C1	50 g
000541	CC/Dentine D-C2	50 g
000542	CC/Dentine D-C3	50 g
000543	CC/Dentine D-C4	50 g
000544	CC/Dentine D-D2	50 g
000545	CC/Dentine D-D3	50 g
000546	CC/Dentine D-D4	50 g
000547	CC/Dentine D-CW California white	50 g

Article no.	Article name	Content
000551	CC/Bleach Opaque O-AB	50 g
000552	CC/Bleach Dentine BD-A	50 g
000553	CC/Bleach Dentine BD-B	50 g
000554	CC/Bleach Dentine BD-B0	50 g
000555	CC/Bleach Enamel S-AB	50 g
000556	CC/Bleach Shoulder SP-AB	50 g
000561	CC/Enamel S-057	50 g
000562	CC/Enamel S-058	50 g
000563	CC/Enamel S-059	50 g
000564	CC/Enamel S-060	50 g
000565	CC/Effect Enamel SI-01 light yellow	50 g
000566	CC/Effect Enamel SI-02 medium yellow	50 g
000567	CC/Effect Enamel SI-03 heavy yellow	50 g
000568	CC/Effect Enamel SI-04 light orange	50 g
000569	CC/Effect Enamel SI-05 medium orange	50 g
000570	CC/Effect Enamel SI-06 heavy orange	50 g
000571	CC/Window UC	50 g
000572	CC/Transpa NT neutral	50 g
000573	CC/Clear CL-O	50 g
000587	CC/Transpa OT+	50 g
000588	CC/Transpa Geller-Mix	50 g
000575	CC/Transpa OT opal	50 g
000576	CC/Transpa TI-1 blue	50 g
000577	CC/Transpa TI-2 white	50 g
000578	CC/Transpa TI-3 pink	50 g
000579	CC/Transpa TI-4 yellow	50 g
000580	CC/Transpa TI-5 grey	50 g
000581	CC/Pearl Enamel PS-0 white	50 g
000582	CC/Pearl Enamel PS-1 blue/white	50 g
000583	CC/Pearl Enamel PS-2 flamingo	50 g
000584	CC/Pearl Enamel PS-3 orange	50 g
000585	CC/Effect Enamel SO-10 blue	50 g
000586	CC/Effect Enamel SO-11 orange	50 g
003501	CC/Transition Dentine TD-A1	50 g
003502	CC/Transition Dentine TD-A2	50 g
003503	CC/Transition Dentine TD-A3	50 g
003504	CC/Transition Dentine TD-A3,5	50 g
003505	CC/Transition Dentine TD-A4	50 g
003506	CC/Transition Dentine TD-B1	50 g
003507	CC/Transition Dentine TD-B2	50 g
003508	CC/Transition Dentine TD-B3	50 g
003509	CC/Transition Dentine TD-B4	50 g
003510	CC/Transition Dentine TD-C1	50 g
003511	CC/Transition Dentine TD-C2	50 g
003512	CC/Transition Dentine TD-C3	50 g
003513	CC/Transition Dentine TD-C4	50 g
003514	CC/Transition Dentine TD-D2	50 g
003515	CC/Transition Dentine TD-D3	50 g



Article no.	Article name	Content
003516	CC/Transition Dentine TD-D4	50 g
003517	CC/Transition Dentine TD-BA	50 g
005011	CC/Opaque Modifier OM-11 white	50 g
005012	CC/Opaque Modifier OM-12 pink	50 g
005013	CC/Opaque Modifier OM-13 lilac	50 g
005014	CC/Opaque Modifier OM-14 grey	50 g
005015	CC/Opaque Modifier OM-15 sahara	50 g
005016	CC/Opaque Modifier OM-16 ocker	50 g
005017	CC/Opaque Modifier OM-17 brown	50 g
005018	CC/Opaque Modifier OM-G gingiva	50 g
005021	CC/Shoulder SP-21 neutral	50 g
005022	CC/Shoulder SP-22 flamingo	50 g
005023	CC/Shoulder SP-23 sand	50 g
005024	CC/Shoulder SP-24 gold	50 g
005025	CC/Shoulder SP-25 red brown	50 g
005026	CC/Shoulder SP-26 yellow grey	50 g
005027	CC/Shoulder SP-27 ivory	50 g
005028	CC/Shoulder SP-28 opaque yellow	50 g
005029	CC/Shoulder SP-29 honey	50 g
005030	CC/Shoulder SP-G gingiva	50 g
005032	CC /Opaque Dentine OD-32 (A2-A3)	50 g
005037	CC /Opaque Dentine OD-37 (B4)	50 g
005041	CC /Opaque Dentine OD-41 (D3)	50 g
005043	CC /Opaque Dentine OD-43 (ivory)	50 g
005044	CC /Opaque Dentine OD-44 (cuba)	50 g
005051	CC /Neck Transpa HT-51 iridescent	50 g
005052	CC/Neck Transpa HT-52 khaki	50 g
005053	CC/Neck Transpa HT-53 sand	50 g
005054	CC/Neck Transpa HT-54 honey	50 g
005055	CC/Neck Transpa HT-55 bordeaux	50 g
005056	CC/Neck Transpa HT-56 ochre	50 g
005061	CC/Make In MI-61 ivory	50 g
005062	CC/Make In MI-62 lemon	50 g
005063	CC/Make In MI-63 honey	50 g
005064	CC/Make In MI-64 flamingo	50 g
005065	CC/Make In MI-65 gold	50 g
005066	CC/Make In MI-66 olive	50 g
005068	CC/Approximal Dentine AD-1 light yellow	50 g
005069	CC/Approximal Dentine AD-2 orange	50 g
005070	CC/Opaque Dentine OD-A1	50 g
005071	CC/Opaque Dentine OD-A2	50 g
005072	CC/Opaque Dentine OD-A3	50 g
005073	CC/Opaque Dentine OD-A3,5	50 g
005074	CC/Opaque Dentine OD-A4	50 g
005075	CC/Opaque Dentine OD-B1	50 g
005076	CC/Opaque Dentine OD-B2	50 g
005077	CC/Opaque Dentine OD-B3	50 g
005078	CC/Opaque Dentine OD-B4	50 g

Article no.	Article name	Content
005079	CC/Opaque Dentine OD-C1	50 g
005080	CC/Opaque Dentine OD-C2	50 g
005081	CC/Opaque Dentine OD-C3	50 g
005082	CC/Opaque Dentine OD-C4	50 g
005083	CC/Opaque Dentine OD-D2	50 g
005084	CC/Opaque Dentine OD-D3	50 g
005085	CC/Opaque Dentine OD-D4	50 g
005591	CC/Gingiva G1 purple	50 g
005592	CC/Gingiva G2 dark pink	50 g
005593	CC/Gingiva G3 light pink	50 g
005594	CC/Gingiva G4 flamingo	50 g
005595	CC/Gingiva G5 rose	50 g
005596	CC/Gingiva G6 dark pink opaque	50 g
005597	CC/Gingiva GN neutral	50 g
005598	CC/Gingiva G7 violet	50 g
	PORCELAIN 250g	
002501	CC/Opaque O-A1	250 g
002502	CC/Opaque O-A2	250 g
002503	CC/Opaque O-A3	250 g
002504	CC/Opaque O-A3,5	250 g
002505	CC/Opaque O-A4	250 g
002506	CC/Opaque O-B1	250 g
002507	CC/Opaque O-B2	250 g
002508	CC/Opaque O-B3	250 g
002509	CC/Opaque O-B4	250 g
002510	CC/Opaque O-C1	250 g
002511	CC/Opaque O-C2	250 g
002512	CC/Opaque O-C3	250 g
002513	CC/Opaque O-C4	250 g
002514	CC/Opaque O-D2	250 g
002515	CC/Opaque O-D3	250 g
002516	CC/Opaque O-D4	250 g
002531	CC/Dentine D-A1	250 g
002532	CC/Dentine D-A2	250 g
002533	CC/Dentine D-A3	250 g
002534	CC/Dentine D-A3,5	250 g
002535	CC/Dentine D-A4	250 g
002536	CC/Dentine D-B1	250 g
002537	CC/Dentine D-B2	250 g
002538	CC/Dentine D-B3	250 g
002539	CC/Dentine D-B4	250 g
002540	CC/Dentine D-C1	250 g
002541	CC/Dentine D-C2	250 g
002542	CC/Dentine D-C3	250 g
002543	CC/Dentine D-C4	250 g
002544	CC/Dentine D-D2	250 g
002545	CC/Dentine D-D3	250 g

CREATION CC | CLASSIC METAL CERAMIC

Article no.	Article name	Content
002546	CC/Dentine D-D4	250 g
002547	CC/California white	250 g
002561	CC/Enamel S-057	250 g
002562	CC/Enamel S-058	250 g
002563	CC/Enamel S-059	250 g
002564	CC/Enamel S-060	250 g
002565	CC/Effect Enamel SI-01 light yellow	250 g
002566	CC/Effect Enamel SI-02 medium yellow	250 g
002567	CC/Effect Enamel SI-03 heavy yellow	250 g
002568	CC/Effect Enamel SI-04 light orange	250 g
002569	CC/Effect Enamel SI-05 medium orange	250 g
002570	CC/Effect Enamel SI-06 heavy orange	250 g
002572	CC/Transpa NT neutral	250 g
002573	CC/Clear CL-O	250 g
002575	CC/Transpa OT opal	250 g
002576	CC/Transpa TI-1 blue	250 g
002577	CC/Transpa TI-2 white	250 g
002578	CC/Transpa TI-3 pink	250 g
002579	CC/Transpa TI-4 yellow	250 g
002580	CC/Transpa TI-5 grey	250 g
002581	CC/Pearl Enamel PS-0 white	250 g
002582	CC/Pearl Enamel PS-1 blue/white	250 g
002583	CC/Pearl Enamel PS-2 flamingo	250 g
002584	CC/Pearl Enamel PS-3 orange	250 g
025071	CC/Opaque Dentine OD-A2	250 g
025072	CC/Opaque Dentine OD-A3	250 g
025073	CC/Opaque Dentine OD-A3,5	250 g
025076	CC/Opaque Dentine OD-B2	250 g
025077	CC/Opaque Dentine OD-B3	250 g
LIQUIDS		
000012	Modelling Liquid high-fusing ML-H	25 ml
000013	Modelling Liquid high-fusing ML-H	50 ml
000014	Modelling Liquid high-fusing ML-H	250 ml
000015	Modelling Liquid high-fusing ML-H	1000 ml
000019	Opaque Liquid high-fusing OL-H	25 ml
000020	Opaque Liquid high-fusing OL-H	50 ml
000021	Opaque Liquid high-fusing OL-H	250 ml
000010	Universal & Glaze Liquid UF/GL	25 ml
000011	Universal & Glaze Liquid UF/GL	50 ml
000025	Shoulder Liquid SPL	25 ml
000026	Shoulder Liquid SPL	50 ml
000090	Moisturing Fluid	25 ml

CREATION ZI-CT | ZIRCONIUM DIOXIDE CERAMIC

Article no.	Article name	Content
PORCELAIN 4g – 15g		
620061	ZI-CT/Frame Shade NT	4 g
620074	ZI-CT/Glaze GL	10 g
620101	ZI-CT/Gingiva G1 purple	15 g
620102	ZI-CT/Gingiva G2 dark pink	15 g
620103	ZI-CT/Gingiva G3 light pink	15 g
620104	ZI-CT/Gingiva G4 flamingo	15 g
620105	ZI-CT/Gingiva G5 rose	15 g
620106	ZI-CT/Gingiva G6 dark pink opaque	15 g
620107	ZI-CT/Gingiva G7 violet	15 g
620108	ZI-CT/Gingiva GN neutral	15 g
620120	ZI-CT/Shoulder SP-AB	15 g
620121	ZI-CT/Shoulder SP-21 neutral	15 g
620122	ZI-CT/Shoulder SP-22 flamingo	15 g
620123	ZI-CT/Shoulder SP-23 sand	15 g
620124	ZI-CT/Shoulder SP-24 gold	15 g
620125	ZI-CT/Shoulder SP-25 red brown	15 g
620126	ZI-CT/Shoulder SP-26 yellow grey	15 g
620127	ZI-CT/Shoulder SP-27 ivory	15 g
620128	ZI-CT/Shoulder SP-28 opaque yellow	15 g
620129	ZI-CT/Shoulder SP-29 honey	15 g
620131	ZI-CT/Opaque Dentine OD-32 havanna	15 g
620132	ZI-CT/Opaque Dentine OD-37 curry	15 g
620133	ZI-CT/Opaque Dentine OD-41 orange	15 g
620134	ZI-CT/Opaque Dentine OD-43 ivory	15 g
620135	ZI-CT/Opaque Dentine OD-44 cuba	15 g
620146	ZI-CT/Approximal Dentine AD-1 light yellow	15 g
620147	ZI-CT/Approximal Dentine AD-2 orange	15 g
620151	ZI-CT/Neck Transpa HT-51 iridescent	15 g
620152	ZI-CT/Neck Transpa HT-52 kaki	15 g
620153	ZI-CT/Neck Transpa HT-53 sand	15 g
620154	ZI-CT/Neck Transpa HT-54 honey	15 g
620155	ZI-CT/Neck Transpa HT-55 bordeaux	15 g
620156	ZI-CT/Neck Transpa HT-56 ochre	15 g
620161	ZI-CT/Make In MI-61 ivory	15 g
620162	ZI-CT/Make In MI-62 lemon	15 g
620163	ZI-CT/Make In MI-63 honey	15 g
620164	ZI-CT/Make In MI-64 flamingo	15 g
620165	ZI-CT/Make In MI-65 gold	15 g
620166	ZI-CT/Make In MI-66 olive	15 g
PORCELAIN 20g		
620001	ZI-CT/Dentine D-A1	20 g
620002	ZI-CT/Dentine D-A2	20 g
620003	ZI-CT/Dentine D-A3	20 g
620004	ZI-CT/Dentine D-A3,5	20 g
620005	ZI-CT/Dentine D-A4	20 g
620006	ZI-CT/Dentine D-B1	20 g

CREATION ZI-CT | ZIRCONIUM DIOXIDE CERAMIC

Article no.	Article name	Content
620007	ZI-CT/Dentine D-B2	20 g
620008	ZI-CT/Dentine D-B3	20 g
620009	ZI-CT/Dentine D-B4	20 g
620010	ZI-CT/Dentine D-C1	20 g
620011	ZI-CT/Dentine D-C2	20 g
620012	ZI-CT/Dentine D-C3	20 g
620013	ZI-CT/Dentine D-C4	20 g
620014	ZI-CT/Dentine D-D2	20 g
620015	ZI-CT/Dentine D-D3	20 g
620016	ZI-CT/Dentine D-D4	20 g
620017	ZI-CT/Enamel E-57	20 g
620018	ZI-CT/Enamel E-58	20 g
620019	ZI-CT/Enamel E-59	20 g
620020	ZI-CT/Enamel E-60	20 g
620021	ZI-CT/Clear CL-O	20 g
620022	ZI-CT/Window UC	20 g
620023	ZI-CT/Bleach Dentine BD-A	20 g
620024	ZI-CT/Bleach Dentine BD-B	20 g
620025	ZI-CT/Bleach Dentine BD-B0	20 g
620026	ZI-CT/Bleach Enamel S-AB	20 g
620031	ZI-CT/Effect Enamel SI-01 light yellow	20 g
620032	ZI-CT/Effect Enamel SI-02 medium yellow	20 g
620033	ZI-CT/Effect Enamel SI-03 heavy yellow	20 g
620034	ZI-CT/Effect Enamel SI-04 light orange	20 g
620035	ZI-CT/Effect Enamel SI-05 medium orange	20 g
620036	ZI-CT/Effect Enamel SI-06 heavy orange	20 g
620037	ZI-CT/Effect Enamel SO-10 blue	20 g
620038	ZI-CT/Effect Enamel SO-11 orange	20 g
620039	ZI-CT/Transpa NT neutral	20 g
620046	ZI-CT/Transpa OT+	20 g
620047	ZI-CT/Transpa Geller-Mix	20 g
620040	ZI-CT/Transpa OT opal	20 g
620041	ZI-CT/Transpa TI-1 blue	20 g
620042	ZI-CT/Transpa TI-2 white	20 g
620043	ZI-CT/Transpa TI-3 pink	20 g
620044	ZI-CT/Transpa TI-4 yellow	20 g
620045	ZI-CT/Transpa TI-5 grey	20 g
620050	ZI-CT/Pearl Enamel PS-0 white	20 g
620051	ZI-CT/Pearl Enamel PS-1 blue/white	20 g
620052	ZI-CT/Pearl Enamel PS-2 flamingo	20 g
620053	ZI-CT/Pearl Enamel PS-3 orange	20 g
620060	ZI-CT/Correction Powder KM	20 g
	PORCELAIN 50 g	
620201	ZI-CT/Dentine D-A1	50 g
620202	ZI-CT/Dentine D-A2	50 g
620203	ZI-CT/Dentine D-A3	50 g
620204	ZI-CT/Dentine D-A3,5	50 g

new

CREATION ZI-CT | ZIRCONIUM DIOXIDE CERAMIC

Article no.	Article name	Content
620205	ZI-CT/Dentine D-A4	50 g
620206	ZI-CT/Dentine D-B1	50 g
620207	ZI-CT/Dentine D-B2	50 g
620208	ZI-CT/Dentine D-B3	50 g
620209	ZI-CT/Dentine D-B4	50 g
620210	ZI-CT/Dentine D-C1	50 g
620211	ZI-CT/Dentine D-C2	50 g
620212	ZI-CT/Dentine D-C3	50 g
620213	ZI-CT/Dentine D-C4	50 g
620214	ZI-CT/Dentine D-D2	50 g
620215	ZI-CT/Dentine D-D3	50 g
620216	ZI-CT/Dentine D-D4	50 g
620217	ZI-CT/Enamel E-57	50 g
620218	ZI-CT/Enamel E-58	50 g
620219	ZI-CT/Enamel E-59	50 g
620220	ZI-CT/Enamel E-60	50 g
620221	ZI-CT/Clear CL-O	50 g
620222	ZI-CT/Window UC	50 g
620223	ZI-CT/Bleach Dentine BD-A	50 g
620224	ZI-CT/Bleach Dentine BD-B	50 g
620225	ZI-CT/Bleach Dentine BD-B0	50 g
620226	ZI-CT/Bleach Enamel S-AB	50 g
620231	ZI-CT/Effect Enamel SI-01 light yellow	50 g
620232	ZI-CT/Effect Enamel SI-02 medium yellow	50 g
620233	ZI-CT/Effect Enamel SI-03 heavy yellow	50 g
620234	ZI-CT/Effect Enamel SI-04 light orange	50 g
620235	ZI-CT/Effect Enamel SI-05 medium orange	50 g
620236	ZI-CT/Effect Enamel SI-06 heavy orange	50 g
620237	ZI-CT/Effect Enamel SO-10 blue	50 g
620238	ZI-CT/Effect Enamel SO-11 orange	50 g
620239	ZI-CT/Transpa NT neutral	50 g
620246	ZI-CT/Transpa OT+	50 g
620247	ZI-CT/Transpa Geller-Mix	50 g
620240	ZI-CT/Transpa OT opal	50 g
620241	ZI-CT/Transpa TI-1 blue	50 g
620242	ZI-CT/Transpa TI-2 white	50 g
620243	ZI-CT/Transpa TI-3 pink	50 g
620244	ZI-CT/Transpa TI-4 yellow	50 g
620245	ZI-CT/Transpa TI-5 grey	50 g
620250	ZI-CT/Pearl Enamel PS-0 white	50 g
620251	ZI-CT/Pearl Enamel PS-1 blue/white	50 g
620252	ZI-CT/Pearl Enamel PS-2 flamingo	50 g
620253	ZI-CT/Pearl Enamel PS-3 orange	50 g
620261	ZI-CT/Opaque Dentine OD-32 havanna	50 g
620262	ZI-CT/Opaque Dentine OD-37 curry	50 g
620263	ZI-CT/Opaque Dentine OD-41 orange	50 g
620264	ZI-CT/Opaque Dentine OD-43 ivory	50 g
620265	ZI-CT/Opaque Dentine OD-44 cuba	50 g

new


CREATION ZI-CT | ZIRCONIUM DIOXIDE CERAMIC

Article no.	Article name	Content
620266	ZI-CT/Approximal Dentine AD-1 light yellow	50 g
620267	ZI-CT/Approximal Dentine AD-2 orange	50 g
620271	ZI-CT/Neck Transpa HT-51 iridescent	50 g
620272	ZI-CT/Neck Transpa HT-52 kaki	50 g
620273	ZI-CT/Neck Transpa HT-53 sand	50 g
620274	ZI-CT/Neck Transpa HT-54 honey	50 g
620275	ZI-CT/Neck Transpa HT-55 bordeaux	50 g
620276	ZI-CT/Neck Transpa HT-56 ochre	50 g
PORCELAIN 250 g		
620302	ZI-CT/Dentine D-A2	250 g
620303	ZI-CT/Dentine D-A3	250 g
620318	ZI-CT/Enamel E-58	250 g
620319	ZI-CT/Enamel E-59	250 g
620321	ZI-CT/Clear CL-O	250 g
LIQUIDS		
000012	Modelling Liquid high-fusing ML-H	25 ml
000013	Modelling Liquid high-fusing ML-H	50 ml
000014	Modelling Liquid high-fusing ML-H	250 ml
000015	Modelling Liquid high-fusing ML-H	1000 ml
000010	Universal & Glaze Liquid UF/GL	25 ml
000011	Universal & Glaze Liquid UF/GL	50 ml
000025	Shoulder Liquid SPL	25 ml
000026	Shoulder Liquid SPL	50 ml
000090	Moisturing Fluid	25 ml

CREATION ZI-F | LOW-FUSING ZIRCONIUM DIOXIDE CERAMIC

Article no.	Article name	Content
PORCELAIN 4 g – 15 g		
601087	ZI-F/Frame Shade NT	4 g
601074	ZI-F/Glaze GL	10 g
601081	ZI-F/Frame Shade FS-1	10 g
601082	ZI-F/Frame Shade FS-2	10 g
601083	ZI-F/Frame Shade FS-3	10 g
601084	ZI-F/Frame Shade FS-4	10 g
601085	ZI-F/Frame Shade FS-IL (Illusion)	10 g
601086	ZI-F/Frame Shade FS-G (Gingiva)	10 g
602051	ZI-F/Bleach Frame Shade FS-AB	10 g
601091	ZI-F/Neck Dentine HD-01	15 g
601092	ZI-F/Neck Dentine HD-02	15 g
601093	ZI-F/Neck Dentine HD-03	15 g
601094	ZI-F/Neck Dentine HD-04	15 g
602056	ZI-F/Bleach Shoulder SP-AB	15 g
602121	ZI-F/Shoulder SP-21 neutral	15 g
602122	ZI-F/Shoulder SP-22 flamingo	15 g
602123	ZI-F/Shoulder SP-23 sand	15 g
602124	ZI-F/Shoulder SP-24 gold	15 g
602125	ZI-F/Shoulder SP-25 red brown	15 g
602128	ZI-F/Shoulder SP-28 opaque yellow	15 g
602145	ZI-F/Gingiva G1 purple	15 g
602146	ZI-F/Gingiva G2 dark pink	15 g
602147	ZI-F/Gingiva G3 light pink	15 g
602148	ZI-F/Gingiva G4 flamingo	15 g
602149	ZI-F/Gingiva G5 rose	15 g
602150	ZI-F/Gingiva G6 dark pink opaque	15 g
602151	ZI-F/Gingiva GN neutral	15 g
602157	ZI-F/Gingiva G7 violet	15 g
602161	ZI-F/Make In MI-61 ivory	15 g
602163	ZI-F/Make In MI-63 honey	15 g
602165	ZI-F/Make In MI-65 gold	15 g
652132	ZI-F/Opaque Dentine OD-32 havanna	15 g
652137	ZI-F/Opaque Dentine OD-37 curry	15 g
652141	ZI-F/Opaque Dentine OD-41 orange	15 g
652143	ZI-F/Opaque Dentine OD-43 ivory	15 g
652144	ZI-F/Opaque Dentine OD-44 cuba	15 g
652151	ZI-F/Neck Transpa HT-51 iridescent	15 g
652152	ZI-F/Neck Transpa HT-52 kaki	15 g
652153	ZI-F/Neck Transpa HT-53 sand	15 g
652154	ZI-F/Neck Transpa HT-54 honey	15 g
652156	ZI-F/Neck Transpa HT-56 ochre	15 g
652168	ZI-F/Approximal Dentine AD-1 light yellow	15 g
652169	ZI-F/Approximal Dentine AD-2 orange	15 g
PORCELAIN 20 g		
652001	ZI-F/Dentine D-A1	20 g
652002	ZI-F/Dentine D-A2	20 g

CREATION ZI-F | LOW-FUSING ZIRCONIUM DIOXIDE CERAMIC

Article no.	Article name	Content
652003	ZI-F/Dentine D-A3	20 g
652004	ZI-F/Dentine D-A3,5	20 g
652005	ZI-F/Dentine D-A4	20 g
652006	ZI-F/Dentine D-B1	20 g
652007	ZI-F/Dentine D-B2	20 g
652008	ZI-F/Dentine D-B3	20 g
652009	ZI-F/Dentine D-B4	20 g
652010	ZI-F/Dentine D-C1	20 g
652011	ZI-F/Dentine D-C2	20 g
652012	ZI-F/Dentine D-C3	20 g
652013	ZI-F/Dentine D-C4	20 g
652014	ZI-F/Dentine D-D2	20 g
652015	ZI-F/Dentine D-D3	20 g
652016	ZI-F/Dentine D-D4	20 g
652052	ZI-F/Bleach Dentine BD-A	20 g
652053	ZI-F/Bleach Dentine BD-B	20 g
652054	ZI-F/Bleach Dentine BD-B0	20 g
652055	ZI-F/Bleach Enamel S-AB	20 g
652057	ZI-F/Enamel E-57	20 g
652058	ZI-F/Enamel E-58	20 g
652059	ZI-F/Enamel E-59	20 g
652060	ZI-F/Enamel E-60	20 g
652066	ZI-F/Effect Enamel SI-02 medium yellow	20 g
652068	ZI-F/Effect Enamel SI-04 light orange	20 g
652070	ZI-F/Effect Enamel SI-06 heavy orange	20 g
602072	ZI-F/Window UC	20 g
652073	ZI-F/Clear CL-O	20 g
652074	ZI-F/Transpa NT neutral	20 g
 652087	ZI-F/Transpa OT+	20 g
652088	ZI-F/Transpa Geller-Mix	20 g
652075	ZI-F/Transpa OT opal	20 g
652076	ZI-F/Transpa TI-1 blue	20 g
652077	ZI-F/Transpa TI-2 white	20 g
652078	ZI-F/Transpa TI-3 pink	20 g
652079	ZI-F/Transpa TI-4 yellow	20 g
652080	ZI-F/Transpa TI-5 grey	20 g
652081	ZI-F/Effect Enamel PS-0 white	20 g
652083	ZI-F/Effect Enamel PS-3 orange	20 g
652085	ZI-F/Effect Enamel SO-10 blue	20 g
652086	ZI-F/Effect Enamel SO-11 orange	20 g
652090	ZI-F/Correction Powder KM	20 g
602174	ZI-F/Glaze GL	20 g
	PORCELAIN 50 g	
605056	ZI-F/Bleach Shoulder SP-AB	50 g
605121	ZI-F/Shoulder SP-21 neutral	50 g
605122	ZI-F/Shoulder SP-22 flamingo	50 g
605123	ZI-F/Shoulder SP-23 sand	50 g

CREATION ZI-F | LOW-FUSING ZIRCONIUM DIOXIDE CERAMIC

Article no.	Article name	Content
605124	ZI-F/Shoulder SP-24 gold	50 g
605125	ZI-F/Shoulder SP-25 red brown	50 g
605128	ZI-F/Shoulder SP-28 opaque yellow	50 g
605145	ZI-F/Gingiva G1 purple	50 g
605146	ZI-F/Gingiva G2 dark pink	50 g
605147	ZI-F/Gingiva G3 light pink	50 g
605148	ZI-F/Gingiva G4 flamingo	50 g
605149	ZI-F/Gingiva G5 rose	50 g
605150	ZI-F/Gingiva G6 dark pink opaque	50 g
605151	ZI-F/Gingiva GN neutral	50 g
605157	ZI-F/Gingiva G7 violet	50 g
605161	ZI-F/Make In MI-61 ivory	50 g
605163	ZI-F/Make In MI-63 honey	50 g
605165	ZI-F/Make In MI-65 gold	50 g
655001	ZI-F/Dentine D-A1	50 g
655002	ZI-F/Dentine D-A2	50 g
655003	ZI-F/Dentine D-A3	50 g
655004	ZI-F/Dentine D-A3,5	50 g
655005	ZI-F/Dentine D-A4	50 g
655006	ZI-F/Dentine D-B1	50 g
655007	ZI-F/Dentine D-B2	50 g
655008	ZI-F/Dentine D-B3	50 g
655009	ZI-F/Dentine D-B4	50 g
655010	ZI-F/Dentine D-C1	50 g
655011	ZI-F/Dentine D-C2	50 g
655012	ZI-F/Dentine D-C3	50 g
655013	ZI-F/Dentine D-C4	50 g
655014	ZI-F/Dentine D-D2	50 g
655015	ZI-F/Dentine D-D3	50 g
655016	ZI-F/Dentine D-D4	50 g
655052	ZI-F/Bleach Dentine BD-A	50 g
655053	ZI-F/Bleach Dentine BD-B	50 g
655054	ZI-F/Bleach Dentine BD-B0	50 g
655055	ZI-F/Bleach Enamel S-AB	50 g
655057	ZI-F/Enamel E-57	50 g
655058	ZI-F/Enamel E-58	50 g
655059	ZI-F/Enamel E-59	50 g
655060	ZI-F/Enamel E-60	50 g
655066	ZI-F/Effect Enamel SI-02 medium yellow	50 g
655068	ZI-F/Effect Enamel SI-04 light orange	50 g
655070	ZI-F/Effect Enamel SI-06 heavy orange	50 g
605072	ZI-F/Window UC	50 g
655073	ZI-F/Clear CL-O	50 g
655074	ZI-F/Transpa NT neutral	50 g
 655087	ZI-F/Transpa OT+	50 g
655088	ZI-F/Transpa Geller-Mix	50 g
655075	ZI-F/Transpa OT opal	50 g
655076	ZI-F/Transpa TI-1 blue	50 g

CREATION ZI-F | LOW-FUSING ZIRCONIUM DIOXIDE CERAMIC

Article no.	Article name	Content
655077	ZI-F/Transpa TI-2 white	50 g
655078	ZI-F/Transpa TI-3 pink	50 g
655079	ZI-F/Transpa TI-4 yellow	50 g
655080	ZI-F/Transpa TI-5 grey	50 g
655081	ZI-F/Effect Enamel PS-0 white	50 g
655083	ZI-F/Effect Enamel PS-3 orange	50 g
655085	ZI-F/Effect Enamel SO-10 blue	50 g
655086	ZI-F/Effect Enamel SO-11 orange	50 g
655132	ZI-F/Opaque Dentine OD-32 havanna	50 g
655137	ZI-F/Opaque Dentine OD-37 curry	50 g
655141	ZI-F/Opaque Dentine OD-41 orange	50 g
655143	ZI-F/Opaque Dentine OD-43 ivory	50 g
655144	ZI-F/Opaque Dentine OD-44 cuba	50 g
655151	ZI-F/Neck Transpa HT-51 iridescent	50 g
655152	ZI-F/Neck Transpa HT-52 kaki	50 g
655153	ZI-F/Neck Transpa HT-53 sand	50 g
655154	ZI-F/Neck Transpa HT-54 honey	50 g
655156	ZI-F/Neck Transpa HT-56 ochre	50 g
655168	ZI-F/Approximal Dentine AD-1 light yellow	50 g
655169	ZI-F/Approximal Dentine AD-2 orange	50 g
LIQUIDS		
000016	Modelling Liquid low-fusing ML-L	25 ml
000017	Modelling Liquid low-fusing ML-L	50 ml
000018	Modelling Liquid low-fusing ML-L	250 ml
000010	Universal & Glaze Liquid UF/GL	25 ml
000011	Universal & Glaze Liquid UF/GL	50 ml
000025	Shoulder Liquid SPL	25 ml
000026	Shoulder Liquid SPL	50 ml
000090	Moisturing Fluid	25 ml

CREATION LS/LS PRESS | LITHIUM DISILICATE

Article no.	Article name	Content
INGOTS 3g		
830101	LS/LS Press, MO-0	5 x 3 g
830102	LS/LS Press, MO-1	5 x 3 g
830103	LS/LS Press, MO-2	5 x 3 g
830104	LS/LS Press LT-A	5 x 3 g
830105	LS/LS Press LT-B	5 x 3 g
830106	LS/LS Press LT-C	5 x 3 g
830107	LS/LS Press LT-D	5 x 3 g
830108	LS/LS Press MT-B00	5 x 3 g
830109	LS/LS Press MT-B0	5 x 3 g
830110	LS/LS Press MT-A1	5 x 3 g
830111	LS/LS Press MT-A2	5 x 3 g
830112	LS/LS Press MT-A3	5 x 3 g
830113	LS/LS Press MT-B1	5 x 3 g
830114	LS/LS Press MT-B2	5 x 3 g
830117	LS/LS Press MT-D2	5 x 3 g
830122	LS/LS Press HT-B00	5 x 3 g
830123	LS/LS Press HT-B0	5 x 3 g
830118	LS/LS Press HT-1	5 x 3 g
830119	LS/LS Press HT-2	5 x 3 g
830120	LS/LS Press HT-3	5 x 3 g
830121	LS/LS Press HT-4	5 x 3 g
PORCELAIN 10g-20g		
830001	LS/Dentine D-A1	20 g
830002	LS/Dentine D-A2	20 g
830003	LS/Dentine D-A3	20 g
830004	LS/Dentine D-A3,5	20 g
830005	LS/Dentine D-A4	20 g
830006	LS/Dentine D-B1	20 g
830007	LS/Dentine D-B2	20 g
830008	LS/Dentine D-B3	20 g
830009	LS/Dentine D-B4	20 g
830010	LS/Dentine D-C1	20 g
830011	LS/Dentine D-C2	20 g
830012	LS/Dentine D-C3	20 g
830013	LS/Dentine D-C4	20 g
830014	LS/Dentine D-D2	20 g
830015	LS/Dentine D-D3	20 g
830016	LS/Dentine D-D4	20 g
830022	LS/Bleach Dentine BD-A	20 g
830023	LS/Bleach Dentine BD-B	20 g
830024	LS/Bleach Dentine BD-B0	20 g
830040	LS/Opaque Dentine OD-32	15 g
830041	LS/Opaque Dentine OD-37	15 g
830042	LS/Opaque Dentine OD-41	15 g
830043	LS/Opaque Dentine OD-43	15 g
830017	LS/Enamel E-57	20 g

Article no.	Article name	Content
830018	LS/Enamel E-58	20 g
830019	LS/Enamel E-59	20 g
830020	LS/Enamel E-60	20 g
830025	LS/Enamel Bleach S-AB	20 g
830021	LS/Clear CL-O	20 g
830026	LS/Transpa NT	20 g
830056	LS/Transpa OT+	20 g
830057	LS/Transpa Geller-Mix	20 g
830027	LS/Transpa OT	20 g
830028	LS/Transpa TI-01	20 g
830029	LS/Transpa TI-02	20 g
830030	LS/Transpa TI-03	20 g
830031	LS/Transpa TI-04	20 g
830032	LS/Transpa TI-05	20 g
830033	LS/Pearl Enamel PS-0	20 g
830035	LS/Effect Enamel SI-02	20 g
830036	LS/Effect Enamel SI-04	20 g
830038	LS/Effect Enamel SO-10	20 g
830045	LS/Neck Transpa HT-51	15 g
830046	LS/Neck Transpa HT-52	15 g
830047	LS/Neck Transpa HT-53	15 g
830048	LS/Neck Transpa HT-54	15 g
830050	LS/Make In MI-61	15 g
830051	LS/Make In MI-63	15 g
830052	LS/Correction Powder KM	20 g
830055	LS/Glaze GL	10 g
LIQUIDS		
000016	Modelling Liquid low-fusing ML-L	25 ml
000017	Modelling Liquid low-fusing ML-L	50 ml
000018	Modelling Liquid low-fusing ML-L	250 ml
000010	Universal & Glaze Liquid UF/GL	25 ml
000011	Universal & Glaze Liquid UF/GL	50 ml
000090	Moisturing Fluid	25 ml

new

Article no.	Article name	Content
001210	Magic Colour Dentine Shade DS-A	3 g
001211	Magic Colour Dentine Shade DS-B	3 g
001212	Magic Colour Dentine Shade DS-C	3 g
001213	Magic Colour Dentine Shade DS-D	3 g
001214	Magic Colour Make In MI-61 ivory	3 g
001215	Magic Colour Make In MI-63 honey yellow	3 g
001216	Magic Colour Gingiva Shade GS-1 raspberry	3 g
001217	Magic Colour Gingiva Shade GS-2 salmon red	3 g
001218	Magic Colour Gingiva Shade GS-3 red violet	3 g
001221	Magic Colour Highlight HL-1 white	3 g
001222	Magic Colour Highlight HL-2 eggshell	3 g
001223	Magic Colour Highlight HL-3 lemon yellow	3 g
001224	Magic Colour Highlight HL-4 mandarine	3 g
001225	Magic Colour Highlight HL-5 flamingo	3 g
001226	Magic Colour Highlight HL-6 apricot	3 g
001227	Magic Colour Highlight HL-7 light brown	3 g
001228	Magic Colour Highlight HL-8 medium brown	3 g
001229	Magic Colour Highlight HL-9 olive	3 g
001230	Magic Colour Highlight HL-10 red	3 g
001231	Magic Colour Highlight HL-11 dove blue	3 g
001232	Magic Colour Highlight HL-12 grey	3 g
001233	Magic Colour Highlight HL-13 deep blue	3 g
001234	Magic Colour Highlight HL-14 fissure	3 g
001235	Magic Colour Highlight HL-15 illusion	3 g
001219	Magic Colour Glaze	3 g
001220	Magic Colour Glaze Fluo	3 g
001239	Magic Colour Glaze	10 g
001240	Magic Colour Glaze Fluo	10 g
LIQUIDS		
001241	Magic Colour Liquid GL	25 ml
001242	Magic Colour Liquid GL	50 ml
001243	Magic Colour Special Liquid ML	25 ml
001244	Magic Colour Special Liquid ML	50 ml

new

CREACOLOR | STAINS AND MODIFIERS

Article no.	Article name	Content
001101	Make up Neo MN-F1 white	4 g
001102	Make up Neo MN-F2 eggshell white	4 g
001103	Make up Neo MN-F3 lemon yellow	4 g
001104	Make up Neo MN-F4 mandarine	4 g
001105	Make up Neo MN-F5 flamingo	4 g
001106	Make up Neo MN-F6 apricot	4 g
001107	Make up Neo MN-F7 light brown	4 g
001108	Make up Neo MN-F8 medium brown	4 g
001109	Make up Neo MN-F9 olive	4 g
001110	Make up Neo MN-F10 red	4 g
001111	Make up Neo MN-F11 blue	4 g
001112	Make up Neo MN-F12 grey	4 g
001113	Make up Neo MN-F13 deep blue	4 g
001114	Make up Neo MN-FA stain A	4 g
001115	Make up Neo MN-FB stain B	4 g
001116	Make up Neo MN-FC stain C	4 g
001117	Make up Neo MN-FD stain D	4 g
001121	Make up Neo Glaze GL-F	4 g
001151	In Nova Neo INN-1 melone	3 g
001152	In Nova Neo INN-2 rose	3 g
001153	In Nova Neo INN-3 yellow	3 g
001154	In Nova Neo INN-4 red brown	3 g
001155	In Nova Neo INN-5 brown	3 g
001156	In Nova Neo INN-6 olive	3 g
001157	In Nova Neo INN-7 grey	3 g
001158	In Nova Neo INN-8 blue	3 g
001159	In Nova Neo INN-9 white	3 g
001160	In Nova Neo INN-10 mais	3 g
001161	In Nova Neo INN-IL Illusion	3 g
001162	In Nova Neo INN-CRL Crackliner	3 g
001125	Make up Neo Fluid	25 ml
001126	Make up Neo Reconditioner Fluid	8 ml
001163	In Nova Neo Fluid	25 ml

CREATION LIQUIDS

Article no.	Article name	Content
000012	Modelling Liquid high-fusing ML-H	25 ml
000013	Modelling Liquid high-fusing ML-H	50 ml
000014	Modelling Liquid high-fusing ML-H	250 ml
000015	Modelling Liquid high-fusing ML-H	1000 ml
000016	Modelling Liquid low-fusing ML-L	25 ml
000017	Modelling Liquid low-fusing ML-L	50 ml
000018	Modelling Liquid low-fusing ML-L	250 ml
000019	Opaque Liquid high-fusing OL-H	25 ml
000020	Opaque Liquid high-fusing OL-H	50 ml
000021	Opaque Liquid high-fusing OL-H	250 ml
000010	Universal & Glaze Liquid UF/GL	25 ml
000011	Universal & Glaze Liquid UF/GL	50 ml
000025	Shoulder Liquid SPL	25 ml
000026	Shoulder Liquid SPL	50 ml
000090	Moisturing Fluid	25 ml
001241	Magic Colour Liquid GL	25 ml
001242	Magic Colour Liquid GL	50 ml
001243	Magic Colour Special Liquid ML	25 ml
001244	Magic Colour Special Liquid ML	50 ml
001125	Make up Neo Fluid	25 ml
001126	Make up Neo Reconditioner Fluid	8 ml
001163	In Nova Neo Fluid	25 ml



CREATION CERAMIC ACCESSORIES

Article no.	Article name	Content
000131	Brush Nr. I	1 pc.
000132	Brush Nr. II	1 pc.
000133	Brush Nr. III	1 pc.
000134	Brush Nr. IV	1 pc.
000135	Brush Nr. V	1 pc.
000136	Brush Kit	1 pc.
000321	Brush Creapast	1 pc.
000060	Sketch Pad	1 pc.
839912	LS/Manual DE-EN	1 pc.
910360	ZI-CT/Manual DE-EN	1 pc.
911020	CC/Manual DE-EN	1 pc.
911506	Ceramic meets Gingiva	1 pc.
911510	VC Brochure	1 pc.
911517	VC Workbook	1 pc.
911530	Magic Colour Manuel DE-EN	1 pc.
000059	CreaPen Separating Pen	1 pc.
000081	Creation Flüssige firing pad 10 g	1 pc.
000083	Creation Flüssige firing pad (3 x 10 g)	1 pack.

CREATION SHADE GUIDES

Article no.	Article name	Content
KIT-BASED SHADE GUIDES		
000064	CC/Shade Guide Kit 1 804	1 pc.
000068	CC/Shade Guide OM 11-17+G	1 pc.
000073	CC/Shade Guide Kit 2 1508	1 pc.
000087	CC/Shade Guide Transition Dentine	1 pc.
000092	ZI-CT/Shade Guide Kit 1	1 pc.
000093	ZI-CT/Shade Guide Kit 2	1 pc.
000076	ZI-F/Shade Guide Kit 1 (28 Shades)	1 pc.
000077	ZI-F/Shade Guide Kit 2 (26 Shades)	1 pc.
000058	Creation shade tab	1 pc.
000091	Shade Guide Wheel Empty	1 pc.
SHADE GUIDES		
000040	Shade Guide Dentine A-D (16 tabs)	1 pc.
000041	Shade Guide Opaque Dentine A-D (16 tabs)	1 pc.
000042	Shade Guide Transpa CL, UC, NT, OT (4 tabs)	1 pc.
000043	Shade Guide Opaque Dentine Modifier + AD OD-32, 37, 41, 43, 44, AD-1, 2 (7 tabs)	1 pc.
000044	Shade Guide Enamel E57-E60, SI01-SI06, SO10, SO11, PS0-PS3 (16 tabs)	1 pc.
000045	Shade Guide Transpa Modifier TI1-TI5, HT51-HT56 (11 tabs)	1 pc.
000046	Shade Guide Make In MI61-MI66 (6 tabs)	1 pc.
000047	Shade Guide Shoulder SP21-SP29 (9 tabs)	1 pc.
000048	Shade Guide Gingiva G1-G7, GN (8 tabs)	1 pc.
000049	Shade Guide Bleach BDA, BDB, BDB0, EAB, SP-AB (5 tabs)	1 pc.

Shades A1-D4 are referring to the Vita® Shade Guide.
Vita® is a registered trademark of VITA Zahnfabrik H. Rauter GmbH & Co. KG, Bad Säckingen, Germany.

AQUALINE

Article no.	Article name	Content
AMA-001	Aqualine master, mixing tray for ceramic, anthracite	1 pc.
AMA-002	Aqualine master, mixing tray for ceramic, white	1 pc.
AS-001	Aqualine smart, mixing tray for ceramic, anthracite	1 pc.
AS-002	Aqualine smart, mixing tray for ceramic, white	1 pc.
AM-001	Aqualine mini, mixing tray für Keramik, anthracite	1 pc.
AM-002	Aqualine mini, tray box with stain tray, with 15 cavities	1 pc.
AS-014	Aqualine Pool Set	1 pc.
AP-010	Aqualine master, glass plate, light grey	1 pc.
AP-011	Aqualine master, glass plate, dark grey	1 pc.
AS-010	Aqualine smart, glass plate, light grey	1 pc.
AS-011	Aqualine smart, glass plate, dark grey	1 pc.
AP-013	Aqualine master, cellulose strips (40 pcs.)	1 pack.
AS-012	Aqualine smart, cellulose strips (30 pcs.)	1 pack.
AM-010	Aqualine mini, cellulose strips (30 pcs.)	1 pack.
AMA-018	Aqualine master, labels, self-adhesive for stain (5 pcs.)	1 pack.
AMA-019	Aqualine master, labels, self-adhesive for ceramic (20 pcs.)	1 pack.
ST-003	Aqualine smart tray set, zircon stain plate (3 pcs.)	1 pc.
ST-004	Aqualine master tray set, zircon stain plate (4 pcs.)	1 pc.
AS-015	Aqualine Pool Set, pool set sponge (5 pcs.)	1 pack.
AC-001	Aqualine Glass Care (2 x 30 ml)	1 set
AC-002	Aqualine Two in One Build up Liquid (500 ml)	1 pc.

Article no.	Article name	Content
	PORCELAIN 2 ml – 5 ml	
820005	VC/Base Opaque O-BO	2,4 ml
820006	VC/Cervical Opaque O-CO	2,4 ml
820011	VC/Opaque O-A1	2,4 ml
820012	VC/Opaque O-A2	2,4 ml
820013	VC/Opaque O-A3	2,4 ml
820014	VC/Opaque O-A3.5	2,4 ml
820015	VC/Opaque O-A4	2,4 ml
820016	VC/Opaque O-B1	2,4 ml
820017	VC/Opaque O-B2	2,4 ml
820018	VC/Opaque O-B3	2,4 ml
820019	VC/Opaque O-B4	2,4 ml
820020	VC/Opaque O-C1	2,4 ml
820021	VC/Opaque O-C2	2,4 ml
820022	VC/Opaque O-C3	2,4 ml
820023	VC/Opaque O-C4	2,4 ml
820024	VC/Opaque O-D2	2,4 ml
820025	VC/Opaque O-D3	2,4 ml
820026	VC/Opaque O-D4	2,4 ml
820031	VC/Opaque Dentine OD-32 havanna	2,9 ml
820032	VC/Opaque Dentine OD-37 curry	2,9 ml
820033	VC/Opaque Dentine OD-41 orange	2,9 ml
820034	VC/Opaque Dentine OD-43 ivory	2,9 ml
820035	VC/Opaque Dentine OD-44 cuba	2,9 ml
820041	VC/Dentine D-A1	2,9 ml
820042	VC/Dentine D-A2	2,9 ml
820043	VC/Dentine D-A3	2,9 ml
820044	VC/Dentine D-A3.5	2,9 ml
820045	VC/Dentine D-A4	2,9 ml
820046	VC/Dentine D-B1	2,9 ml
820047	VC/Dentine D-B2	2,9 ml
820048	VC/Dentine D-B3	2,9 ml
820049	VC/Dentine D-B4	2,9 ml
820050	VC/Dentine D-C1	2,9 ml
820051	VC/Dentine D-C2	2,9 ml
820052	VC/Dentine D-C3	2,9 ml
820053	VC/Dentine D-C4	2,9 ml
820054	VC/Dentine D-D2	2,9 ml
820055	VC/Dentine D-D3	2,9 ml
820056	VC/Dentine D-D4	2,9 ml
820057	VC/Enamel E-57	2,9 ml
820058	VC/Enamel E-58	2,9 ml
820059	VC/Enamel E-59	2,9 ml
820060	VC/Enamel E-60	2,9 ml
820061	VC/Pearl Enamel PS-1 blue	2,9 ml
820062	VC/Pearl Enamel PS-2 flamingo	2,9 ml
820063	VC / Effect Enamel SI-01 light yellow	2,9 ml
820064	VC/Effect Enamel SI-02 medium yellow	2,9 ml

Article no.	Article name	Content
820065	VC/Effect Enamel SI-03 heavy yellow	2,9 ml
820066	VC/Transpa TI-01 blue	2,9 ml
820067	VC/Transpa TI-02 white	2,9 ml
820068	VC/Transpa TI-04 yellow	2,9 ml
820069	VC/Transpa TI-05 grey	2,9 ml
820070	VC/Neck Transpa HT-52 khaki	2,9 ml
820071	VC/Neck Transpa HT-53 sand	2,9 ml
820072	VC/Neck Transpa HT-54 honey	2,9 ml
820080	VC/Flow Dentine BW	2,0 ml
820081	VC/Flow Dentine D-A1	2,0 ml
820082	VC/Flow Dentine D-A2	2,0 ml
820083	VC/Flow Dentine D-A3	2,0 ml
820084	VC/Flow Dentine D-A3.5	2,0 ml
820085	VC/Flow Dentine D-B1	2,0 ml
820086	VC/Flow Dentine D-B2	2,0 ml
820087	VC/Flow Dentine D-B3	2,0 ml
820088	VC/Flow Dentine HT	2,0 ml
820089	VC/Flow Opaque Dentine OD-A2	2,0 ml
820090	VC/Flow Opaque Dentine OD-A3	2,0 ml
820091	VC/Flow Enamel EN-L light	2,0 ml
820092	VC/Flow Enamel EN-T transparent	2,0 ml
820100	VC/Gingiva Opaque O-G3 light pink	2,4 ml
820101	VC/Gingiva Opaque O-G4 flamingo	2,4 ml
820102	VC/Gingiva Opaque O-G5 rose	2,4 ml
820103	VC/Gingiva Opaque O-G6 dark pink	2,4 ml
820104	VC/Gingiva G3 light pink	2,9 ml
820105	VC/Gingiva G4 flamingo	2,9 ml
820106	VC/Gingiva G5 rose	2,9 ml
820107	VC/Gingiva G6 dark pink	2,9 ml
820110	VC/Gingiva Modifier GM-1 purple	2,4 ml
820111	VC/Gingiva Modifier GM-2 dark pink	2,4 ml
820112	VC/Gingiva Modifier GM-3 light pink	2,4 ml
820113	VC/Gingiva Modifier GM-5 rose	2,4 ml
820114	VC/Gingiva Modifier GM-6 dark pink opaque	2,4 ml
820115	VC/Gingiva Modifier GM-7 violet	2,4 ml
820116	VC/Gingiva Translucent GT light pink	2,4 ml
820120	VC/MAKE UP NEO MUN-A stain A	2,6 ml
820121	VC/MAKE UP NEO MUN-B stain B	2,6 ml
820122	VC/MAKE UP NEO MUN-C stain C	2,6 ml
820123	VC/MAKE UP NEO MUN-1 white	2,6 ml
820124	VC/MAKE UP NEO MUN-2 eggshell	2,6 ml
820125	VC/MAKE UP NEO MUN-3 lemon yellow	2,6 ml
820126	VC/MAKE UP NEO MUN-4 mandarine	2,6 ml
820127	VC/MAKE UP NEO MUN-7 light brown	2,6 ml
820128	VC/MAKE UP NEO MUN-8 medium brown	2,6 ml
820129	VC/MAKE UP NEO MUN-9 olive	2,6 ml
820130	VC/MAKE UP NEO MUN-10 red	2,6 ml
820131	VC/MAKE UP NEO MUN-11 blue	2,6 ml

CREATION VC | LIGHT-CURING COMPOSITE

Article no.	Article name	Content
820132	VC/MAKE UP NEO MUN-12 grey	2,6 ml
820133	VC/MAKE UP NEO MUN-IL Illusion	2,6 ml
820134	VC/MAKE UP NEO MUN-G Gingiva	2,6 ml
820135	VC/MAKE UP NEO MUN-CL clear	5,0 ml
820136	VC/MAKE UP NEO MUN-CL clear h.c.	5,0 ml
820027	VC/Translucent h.v.	2,4 ml
820028	VC/Translucent l.v.	2,4 ml
ACCESSORIES		
820150	VC/Syringe Plunger	1 pc.
820151	VC/Separator	5,0 ml
820154	VC/Metal Primer	5,0 ml
820155	VC/Composite Primer	3,0 ml
820156	VC/Ceramic Primer	3,0 ml
820157	VC/Disposable Palette	2 x 5 Stk.
820158	VC/Brush Round, Size 1	2 x 5 Stk.
820159	VC/Brush Flat Size 1	2 x 5 Stk.
820160	VC/Brush Nr. 7	1 pc.
820161	VC/Brush Holder	1 pc.
820152	VC/Diamond Polisher	8 g
820153	VC/Air Protect	10,0 ml
820162	VC/Dispensing tip	20 tips + 1 cap
820163	VC/Mixing Pad	1 pc.

Creation Denture Teeth

CREOPAL | CREAPEARL 2



CREOPAL DENTURE TEETH SETS

Article no.	Article name	Tooth shade	Shape	Content
1100305005	Creopal upper jaw anterior tooth	A1	AU05	1 pc.
1100305007	Creopal upper jaw anterior tooth	A1	AU07	1 pc.
1100305010	Creopal upper jaw anterior tooth	A1	AU10	1 pc.
1100305013	Creopal upper jaw anterior tooth	A1	AU13	1 pc.
1100305016	Creopal upper jaw anterior tooth	A1	AU16	1 pc.
1100305019	Creopal upper jaw anterior tooth	A1	AU19	1 pc.
1100305107	Creopal lower jaw anterior tooth	A1	AL07	1 pc.
1100305110	Creopal lower jaw anterior tooth	A1	AL10	1 pc.
1100305113	Creopal lower jaw anterior tooth	A1	AL13	1 pc.
1100305116	Creopal lower jaw anterior tooth	A1	AL16	1 pc.
1100305207	Creopal upper jaw posterior tooth	A1	PU07	1 pc.
1100305210	Creopal upper jaw posterior tooth	A1	PU10	1 pc.
1100305213	Creopal upper jaw posterior tooth	A1	PU13	1 pc.
1100305216	Creopal upper jaw posterior tooth	A1	PU16	1 pc.
1100305307	Creopal lower jaw posterior tooth	A1	PL07	1 pc.
1100305310	Creopal lower jaw posterior tooth	A1	PL10	1 pc.
1100305313	Creopal lower jaw posterior tooth	A1	PL13	1 pc.
1100305316	Creopal lower jaw posterior tooth	A1	PL16	1 pc.
1100315005	Creopal upper jaw anterior tooth	A2	AU05	1 pc.
1100315007	Creopal upper jaw anterior tooth	A2	AU07	1 pc.
1100315010	Creopal upper jaw anterior tooth	A2	AU10	1 pc.
1100315013	Creopal upper jaw anterior tooth	A2	AU13	1 pc.
1100315016	Creopal upper jaw anterior tooth	A2	AU16	1 pc.
1100315019	Creopal upper jaw anterior tooth	A2	AU19	1 pc.
1100315107	Creopal lower jaw anterior tooth	A2	AL07	1 pc.
1100315110	Creopal lower jaw anterior tooth	A2	AL10	1 pc.
1100315113	Creopal lower jaw anterior tooth	A2	AL13	1 pc.
1100315116	Creopal lower jaw anterior tooth	A2	AL16	1 pc.
1100315207	Creopal upper jaw posterior tooth	A2	PU07	1 pc.
1100315210	Creopal upper jaw posterior tooth	A2	PU10	1 pc.
1100315213	Creopal upper jaw posterior tooth	A2	PU13	1 pc.
1100315216	Creopal upper jaw posterior tooth	A2	PU16	1 pc.
1100315307	Creopal lower jaw posterior tooth	A2	PL07	1 pc.
1100315310	Creopal lower jaw posterior tooth	A2	PL10	1 pc.
1100315313	Creopal lower jaw posterior tooth	A2	PL13	1 pc.
1100315316	Creopal lower jaw posterior tooth	A2	PL16	1 pc.
1100325005	Creopal upper jaw anterior tooth	A3	AU05	1 pc.
1100325007	Creopal upper jaw anterior tooth	A3	AU07	1 pc.
1100325010	Creopal upper jaw anterior tooth	A3	AU10	1 pc.
1100325013	Creopal upper jaw anterior tooth	A3	AU13	1 pc.
1100325016	Creopal upper jaw anterior tooth	A3	AU16	1 pc.
1100325019	Creopal upper jaw anterior tooth	A3	AU19	1 pc.
1100325107	Creopal lower jaw anterior tooth	A3	AL07	1 pc.
1100325110	Creopal lower jaw anterior tooth	A3	AL10	1 pc.
1100325113	Creopal lower jaw anterior tooth	A3	AL13	1 pc.
1100325116	Creopal lower jaw anterior tooth	A3	AL16	1 pc.
1100325207	Creopal upper jaw posterior tooth	A3	PU07	1 pc.
1100325210	Creopal upper jaw posterior tooth	A3	PU10	1 pc.

CREOPAL DENTURE TEETH SETS

Article no.	Article name	Tooth shade	Shape	Content
1100325213	Creopal upper jaw posterior tooth	A3	PU13	1 pc.
1100325216	Creopal upper jaw posterior tooth	A3	PU16	1 pc.
1100325307	Creopal lower jaw posterior tooth	A3	PL07	1 pc.
1100325310	Creopal lower jaw posterior tooth	A3	PL10	1 pc.
1100325313	Creopal lower jaw posterior tooth	A3	PL13	1 pc.
1100325316	Creopal lower jaw posterior tooth	A3	PL16	1 pc.
1100335005	Creopal upper jaw anterior tooth	A3.5	AU05	1 pc.
1100335007	Creopal upper jaw anterior tooth	A3.5	AU07	1 pc.
1100335010	Creopal upper jaw anterior tooth	A3.5	AU10	1 pc.
1100335013	Creopal upper jaw anterior tooth	A3.5	AU13	1 pc.
1100335016	Creopal upper jaw anterior tooth	A3.5	AU16	1 pc.
1100335019	Creopal upper jaw anterior tooth	A3.5	AU19	1 pc.
1100335107	Creopal lower jaw anterior tooth	A3.5	AL07	1 pc.
1100335110	Creopal lower jaw anterior tooth	A3.5	AL10	1 pc.
1100335113	Creopal lower jaw anterior tooth	A3.5	AL13	1 pc.
1100335116	Creopal lower jaw anterior tooth	A3.5	AL16	1 pc.
1100335207	Creopal upper jaw posterior tooth	A3.5	PU07	1 pc.
1100335210	Creopal upper jaw posterior tooth	A3.5	PU10	1 pc.
1100335213	Creopal upper jaw posterior tooth	A3.5	PU13	1 pc.
1100335216	Creopal upper jaw posterior tooth	A3.5	PU16	1 pc.
1100335307	Creopal lower jaw posterior tooth	A3.5	PL07	1 pc.
1100335310	Creopal lower jaw posterior tooth	A3.5	PL10	1 pc.
1100335313	Creopal lower jaw posterior tooth	A3.5	PL13	1 pc.
1100335316	Creopal lower jaw posterior tooth	A3.5	PL16	1 pc.
1100345005	Creopal upper jaw anterior tooth	A4	AU05	1 pc.
1100345007	Creopal upper jaw anterior tooth	A4	AU07	1 pc.
1100345010	Creopal upper jaw anterior tooth	A4	AU10	1 pc.
1100345013	Creopal upper jaw anterior tooth	A4	AU13	1 pc.
1100345016	Creopal upper jaw anterior tooth	A4	AU16	1 pc.
1100345019	Creopal upper jaw anterior tooth	A4	AU19	1 pc.
1100345107	Creopal lower jaw anterior tooth	A4	AL07	1 pc.
1100345110	Creopal lower jaw anterior tooth	A4	AL10	1 pc.
1100345113	Creopal lower jaw anterior tooth	A4	AL13	1 pc.
1100345116	Creopal lower jaw anterior tooth	A4	AL16	1 pc.
1100345207	Creopal upper jaw posterior tooth	A4	PU07	1 pc.
1100345210	Creopal upper jaw posterior tooth	A4	PU10	1 pc.
1100345213	Creopal upper jaw posterior tooth	A4	PU13	1 pc.
1100345216	Creopal upper jaw posterior tooth	A4	PU16	1 pc.
1100345307	Creopal lower jaw posterior tooth	A4	PL07	1 pc.
1100345310	Creopal lower jaw posterior tooth	A4	PL10	1 pc.
1100345313	Creopal lower jaw posterior tooth	A4	PL13	1 pc.
1100345316	Creopal lower jaw posterior tooth	A4	PL16	1 pc.
1100355005	Creopal upper jaw anterior tooth	B1	AU05	1 pc.
1100355007	Creopal upper jaw anterior tooth	B1	AU07	1 pc.
1100355010	Creopal upper jaw anterior tooth	B1	AU10	1 pc.
1100355013	Creopal upper jaw anterior tooth	B1	AU13	1 pc.
1100355016	Creopal upper jaw anterior tooth	B1	AU16	1 pc.
1100355019	Creopal upper jaw anterior tooth	B1	AU19	1 pc.

CREOPAL DENTURE TEETH SETS

Article no.	Article name	Tooth shade	Shape	Content
1100465005	Creopal upper jaw anterior tooth	FW2	AU05	1 pc.
1100465007	Creopal upper jaw anterior tooth	FW2	AU07	1 pc.
1100465010	Creopal upper jaw anterior tooth	FW2	AU10	1 pc.
1100465013	Creopal upper jaw anterior tooth	FW2	AU13	1 pc.
1100465016	Creopal upper jaw anterior tooth	FW2	AU16	1 pc.
1100465019	Creopal upper jaw anterior tooth	FW2	AU19	1 pc.
1100465107	Creopal lower jaw anterior tooth	FW2	AL07	1 pc.
1100465110	Creopal lower jaw anterior tooth	FW2	AL10	1 pc.
1100465113	Creopal lower jaw anterior tooth	FW2	AL13	1 pc.
1100465116	Creopal lower jaw anterior tooth	FW2	AL16	1 pc.
1100475005	Creopal upper jaw anterior tooth	FW5	AU05	1 pc.
1100475007	Creopal upper jaw anterior tooth	FW5	AU07	1 pc.
1100475010	Creopal upper jaw anterior tooth	FW5	AU10	1 pc.
1100475013	Creopal upper jaw anterior tooth	FW5	AU13	1 pc.
1100475016	Creopal upper jaw anterior tooth	FW5	AU16	1 pc.
1100475019	Creopal upper jaw anterior tooth	FW5	AU19	1 pc.
1100475107	Creopal lower jaw anterior tooth	FW5	AL07	1 pc.
1100475110	Creopal lower jaw anterior tooth	FW5	AL10	1 pc.
1100475113	Creopal lower jaw anterior tooth	FW5	AL13	1 pc.
1100475116	Creopal lower jaw anterior tooth	FW5	AL16	1 pc.

CREOPAL SHELL - SETS

Article no.	Article name	Tooth shade	Shape	Content
1200305010	Creopal Shell upper jaw anterior tooth	A1	SAU10	1 pc.
1200305013	Creopal Shell upper jaw anterior tooth	A1	SAU13	1 pc.
1200305016	Creopal Shell upper jaw anterior tooth	A1	SAU16	1 pc.
1200305019	Creopal Shell upper jaw anterior tooth	A1	SAU19	1 pc.
1200305110	Creopal Shell lower jaw anterior tooth	A1	SAL10	1 pc.
1200305113	Creopal Shell lower jaw anterior tooth	A1	SAL13	1 pc.
1200305116	Creopal Shell lower jaw anterior tooth	A1	SAL16	1 pc.
1200305210	Creopal Shell upper jaw posterior tooth	A1	SPU10	1 pc.
1200305213	Creopal Shell upper jaw posterior tooth	A1	SPU13	1 pc.
1200305216	Creopal Shell upper jaw posterior tooth	A1	SPU16	1 pc.
1200305219	Creopal Shell upper jaw posterior tooth	A1	SPU19	1 pc.
1200305310	Creopal Shell lower jaw posterior tooth	A1	SPL10	1 pc.
1200305313	Creopal Shell lower jaw posterior tooth	A1	SPL13	1 pc.
1200305316	Creopal Shell lower jaw posterior tooth	A1	SPL16	1 pc.
1200305319	Creopal Shell lower jaw posterior tooth	A1	SPL19	1 pc.
1200315010	Creopal Shell upper jaw anterior tooth	A2	SAU10	1 pc.
1200315013	Creopal Shell upper jaw anterior tooth	A2	SAU13	1 pc.
1200315016	Creopal Shell upper jaw anterior tooth	A2	SAU16	1 pc.
1200315019	Creopal Shell upper jaw anterior tooth	A2	SAU19	1 pc.
1200315110	Creopal Shell lower jaw anterior tooth	A2	SAL10	1 pc.
1200315113	Creopal Shell lower jaw anterior tooth	A2	SAL13	1 pc.
1200315116	Creopal Shell lower jaw anterior tooth	A2	SAL16	1 pc.
1200315210	Creopal Shell upper jaw posterior tooth	A2	SPU10	1 pc.
1200315213	Creopal Shell upper jaw posterior tooth	A2	SPU13	1 pc.
1200315216	Creopal Shell upper jaw posterior tooth	A2	SPU16	1 pc.
1200315219	Creopal Shell upper jaw posterior tooth	A2	SPU19	1 pc.
1200315310	Creopal Shell lower jaw posterior tooth	A2	SPL10	1 pc.
1200315313	Creopal Shell lower jaw posterior tooth	A2	SPL13	1 pc.
1200315316	Creopal Shell lower jaw posterior tooth	A2	SPL16	1 pc.
1200315319	Creopal Shell lower jaw posterior tooth	A2	SPL19	1 pc.
1200325010	Creopal Shell upper jaw anterior tooth	A3	SAU10	1 pc.
1200325013	Creopal Shell upper jaw anterior tooth	A3	SAU13	1 pc.
1200325016	Creopal Shell upper jaw anterior tooth	A3	SAU16	1 pc.
1200325019	Creopal Shell upper jaw anterior tooth	A3	SAU19	1 pc.
1200325110	Creopal Shell lower jaw anterior tooth	A3	SAL10	1 pc.
1200325113	Creopal Shell lower jaw anterior tooth	A3	SAL13	1 pc.
1200325116	Creopal Shell lower jaw anterior tooth	A3	SAL16	1 pc.
1200325210	Creopal Shell upper jaw posterior tooth	A3	SPU10	1 pc.
1200325213	Creopal Shell upper jaw posterior tooth	A3	SPU13	1 pc.
1200325216	Creopal Shell upper jaw posterior tooth	A3	SPU16	1 pc.
1200325219	Creopal Shell upper jaw posterior tooth	A3	SPU19	1 pc.
1200325310	Creopal Shell lower jaw posterior tooth	A3	SPL10	1 pc.
1200325313	Creopal Shell lower jaw posterior tooth	A3	SPL13	1 pc.
1200325316	Creopal Shell lower jaw posterior tooth	A3	SPL16	1 pc.
1200325319	Creopal Shell lower jaw posterior tooth	A3	SPL19	1 pc.
1200335010	Creopal Shell upper jaw anterior tooth	A3.5	SAU10	1 pc.
1200335013	Creopal Shell upper jaw anterior tooth	A3.5	SAU13	1 pc.
1200335016	Creopal Shell upper jaw anterior tooth	A3.5	SAU16	1 pc.

CREOPAL SHELL - SETS

Article no.	Article name	Tooth shade	Shape	Content
1200335019	Creopal Shell upper jaw anterior tooth	A3.5	SAU19	1 pc.
1200335110	Creopal Shell lower jaw anterior tooth	A3.5	SAL10	1 pc.
1200335113	Creopal Shell lower jaw anterior tooth	A3.5	SAL13	1 pc.
1200335116	Creopal Shell lower jaw anterior tooth	A3.5	SAL16	1 pc.
1200335210	Creopal Shell upper jaw posterior tooth	A3.5	SPU10	1 pc.
1200335213	Creopal Shell upper jaw posterior tooth	A3.5	SPU13	1 pc.
1200335216	Creopal Shell upper jaw posterior tooth	A3.5	SPU16	1 pc.
1200335219	Creopal Shell upper jaw posterior tooth	A3.5	SPU19	1 pc.
1200335310	Creopal Shell lower jaw posterior tooth	A3.5	SPL10	1 pc.
1200335313	Creopal Shell lower jaw posterior tooth	A3.5	SPL13	1 pc.
1200335316	Creopal Shell lower jaw posterior tooth	A3.5	SPL16	1 pc.
1200335319	Creopal Shell lower jaw posterior tooth	A3.5	SPL19	1 pc.
1200355010	Creopal Shell upper jaw anterior tooth	B1	SAU10	1 pc.
1200355013	Creopal Shell upper jaw anterior tooth	B1	SAU13	1 pc.
1200355016	Creopal Shell upper jaw anterior tooth	B1	SAU16	1 pc.
1200355019	Creopal Shell upper jaw anterior tooth	B1	SAU19	1 pc.
1200355110	Creopal Shell lower jaw anterior tooth	B1	SAL10	1 pc.
1200355113	Creopal Shell lower jaw anterior tooth	B1	SAL13	1 pc.
1200355116	Creopal Shell lower jaw anterior tooth	B1	SAL16	1 pc.
1200355210	Creopal Shell upper jaw posterior tooth	B1	SPU10	1 pc.
1200355213	Creopal Shell upper jaw posterior tooth	B1	SPU13	1 pc.
1200355216	Creopal Shell upper jaw posterior tooth	B1	SPU16	1 pc.
1200355219	Creopal Shell upper jaw posterior tooth	B1	SPU19	1 pc.
1200355310	Creopal Shell lower jaw posterior tooth	B1	SPL10	1 pc.
1200355313	Creopal Shell lower jaw posterior tooth	B1	SPL13	1 pc.
1200355316	Creopal Shell lower jaw posterior tooth	B1	SPL16	1 pc.
1200355319	Creopal Shell lower jaw posterior tooth	B1	SPL19	1 pc.
1200365010	Creopal Shell upper jaw anterior tooth	B2	SAU10	1 pc.
1200365013	Creopal Shell upper jaw anterior tooth	B2	SAU13	1 pc.
1200365016	Creopal Shell upper jaw anterior tooth	B2	SAU16	1 pc.
1200365019	Creopal Shell upper jaw anterior tooth	B2	SAU19	1 pc.
1200365110	Creopal Shell lower jaw anterior tooth	B2	SAL10	1 pc.
1200365113	Creopal Shell lower jaw anterior tooth	B2	SAL13	1 pc.
1200365116	Creopal Shell lower jaw anterior tooth	B2	SAL16	1 pc.
1200365210	Creopal Shell upper jaw posterior tooth	B2	SPU10	1 pc.
1200365213	Creopal Shell upper jaw posterior tooth	B2	SPU13	1 pc.
1200365216	Creopal Shell upper jaw posterior tooth	B2	SPU16	1 pc.
1200365219	Creopal Shell upper jaw posterior tooth	B2	SPU19	1 pc.
1200365310	Creopal Shell lower jaw posterior tooth	B2	SPL10	1 pc.
1200365313	Creopal Shell lower jaw posterior tooth	B2	SPL13	1 pc.
1200365316	Creopal Shell lower jaw posterior tooth	B2	SPL16	1 pc.
1200365319	Creopal Shell lower jaw posterior tooth	B2	SPL19	1 pc.
1200375010	Creopal Shell upper jaw anterior tooth	B3	SAU10	1 pc.
1200375013	Creopal Shell upper jaw anterior tooth	B3	SAU13	1 pc.
1200375016	Creopal Shell upper jaw anterior tooth	B3	SAU16	1 pc.
1200375019	Creopal Shell upper jaw anterior tooth	B3	SAU19	1 pc.
1200375110	Creopal Shell lower jaw anterior tooth	B3	SAL10	1 pc.
1200375113	Creopal Shell lower jaw anterior tooth	B3	SAL13	1 pc.

CREOPAL SHELL - SETS

Article no.	Article name	Tooth shade	Shape	Content
1200375116	Creopal Shell lower jaw anterior tooth	B3	SAL16	1 pc.
1200375210	Creopal Shell upper jaw posterior tooth	B3	SPU10	1 pc.
1200375213	Creopal Shell upper jaw posterior tooth	B3	SPU13	1 pc.
1200375216	Creopal Shell upper jaw posterior tooth	B3	SPU16	1 pc.
1200375219	Creopal Shell upper jaw posterior tooth	B3	SPU19	1 pc.
1200375310	Creopal Shell lower jaw posterior tooth	B3	SPL10	1 pc.
1200375313	Creopal Shell lower jaw posterior tooth	B3	SPL13	1 pc.
1200375316	Creopal Shell lower jaw posterior tooth	B3	SPL16	1 pc.
1200375319	Creopal Shell lower jaw posterior tooth	B3	SPL19	1 pc.
1200475010	Creopal Shell upper jaw anterior tooth	FW5	SAU10	1 pc.
1200475013	Creopal Shell upper jaw anterior tooth	FW5	SAU13	1 pc.
1200475016	Creopal Shell upper jaw anterior tooth	FW5	SAU16	1 pc.
1200475019	Creopal Shell upper jaw anterior tooth	FW5	SAU19	1 pc.
1200475110	Creopal Shell lower jaw anterior tooth	FW5	SAL10	1 pc.
1200475113	Creopal Shell lower jaw anterior tooth	FW5	SAL13	1 pc.
1200475116	Creopal Shell lower jaw anterior tooth	FW5	SAL16	1 pc.

CREOPAL DENTURE TEETH - PRESENTATION BOX

Article no.	Article name	Tooth shade	Shape	Content
1100000010	Creopal Presentation Box, blank			1 pc.
1100000011	Creopal Presentation Box, incl. 33 sets	A1	all shapes	1 pc.
1100000012	Creopal Presentation Box, incl. 33 sets	A2	all shapes	1 pc.
1100000013	Creopal Presentation Box, incl. 33 sets	A3	all shapes	1 pc.
1100000014	Creopal Presentation Box, incl. 33 sets	A3.5	all shapes	1 pc.
1100000017	Creopal Presentation Box, incl. 33 sets	B2	all shapes	1 pc.
1100000018	Creopal Presentation Box, incl. 33 sets	B3	all shapes	1 pc.

CREOPAL ACCESSORIES

Article no.	Article name	Tooth shade	Shape	Content
1200000001	Creopal Primer			1 pc.
1100000001	Creopal Shade Guide			1 pc.
1000300030	Tooth cabinet (blank, without inlays, 5 drawers)			1 pc.
PEARL00003	Assortment inlay for 72 anterior sets			1 pc.
PEARL00004	Assortment inlay for 48 posterior sets			1 pc.

CREAPEARL 2 DENTURE TEETH SETS

Article no.	Article name	Tooth shade	Shape	Content
1000246020	Creapearl 2 lower jaw posterior tooth Type Dynamicline	D3	DM	1 pc.
1000246021	Creapearl 2 upper jaw posterior tooth Type Dynamicline	D3	DS	1 pc.
1000246022	Creapearl 2 lower jaw posterior tooth Type Dynamicline	D3	DS	1 pc.
1000246023	Creapearl 2 upper jaw posterior tooth Type Balanceline	D3	EM	1 pc.
1000246024	Creapearl 2 lower jaw posterior tooth Type Balanceline	D3	EM	1 pc.
1000246025	Creapearl 2 upper jaw posterior tooth Type Balanceline	D3	ES	1 pc.
1000246026	Creapearl 2 lower jaw posterior tooth Type Balanceline	D3	ES	1 pc.
1000246027	Creapearl 2 upper jaw posterior tooth Type Balanceline	D3	FM	1 pc.
1000246028	Creapearl 2 lower jaw posterior tooth Type Balanceline	D3	FM	1 pc.
1000246029	Creapearl 2 upper jaw posterior tooth Type Balanceline	D3	FS	1 pc.
1000246030	Creapearl 2 lower jaw posterior tooth Type Balanceline	D3	FS	1 pc.
1000246031	Creapearl 2 upper jaw posterior tooth Type Gnathosline	D3	GM	1 pc.
1000246032	Creapearl 2 lower jaw posterior tooth Type Gnathosline	D3	GM	1 pc.
1000246033	Creapearl 2 upper jaw posterior tooth Type Gnathosline	D3	GS	1 pc.
1000246034	Creapearl 2 lower jaw posterior tooth Type Gnathosline	D3	GS	1 pc.
1000256002	Creapearl 2 upper jaw anterior tooth Type Vario	D4	V61	1 pc.
1000256003	Creapearl 2 upper jaw anterior tooth Type Vario	D4	V63	1 pc.
1000256004	Creapearl 2 upper jaw anterior tooth Type Vario	D4	V65	1 pc.
1000256005	Creapearl 2 upper jaw anterior tooth Type Vario	D4	V68	1 pc.
1000256006	Creapearl 2 upper jaw anterior tooth Type Vario	D4	V69	1 pc.
1000256007	Creapearl 2 upper jaw anterior tooth Type Anatomic	D4	A71	1 pc.
1000256008	Creapearl 2 upper jaw anterior tooth Type Anatomic	D4	A73	1 pc.
1000256009	Creapearl 2 upper jaw anterior tooth Type Anatomic	D4	A75	1 pc.
1000256010	Creapearl 2 upper jaw anterior tooth Type Anatomic	D4	A78	1 pc.
1000256011	Creapearl 2 upper jaw anterior tooth Type Anatomic	D4	A79	1 pc.
1000256012	Creapearl 2 lower jaw anterior tooth Type U	D4	U1	1 pc.
1000256013	Creapearl 2 lower jaw anterior tooth Type U	D4	U3	1 pc.
1000256014	Creapearl 2 lower jaw anterior tooth Type U	D4	U5	1 pc.
1000256015	Creapearl 2 lower jaw anterior tooth Type U	D4	U7	1 pc.
1000256016	Creapearl 2 lower jaw anterior tooth Type U	D4	U9	1 pc.
1000256017	Creapearl 2 upper jaw posterior tooth Type Dynamicline	D4	DL	1 pc.
1000256018	Creapearl 2 lower jaw posterior tooth Type Dynamicline	D4	DL	1 pc.
1000256019	Creapearl 2 upper jaw posterior tooth Type Dynamicline	D4	DM	1 pc.
1000256020	Creapearl 2 lower jaw posterior tooth Type Dynamicline	D4	DM	1 pc.
1000256021	Creapearl 2 upper jaw posterior tooth Type Dynamicline	D4	DS	1 pc.
1000256022	Creapearl 2 lower jaw posterior tooth Type Dynamicline	D4	DS	1 pc.
1000256023	Creapearl 2 upper jaw posterior tooth Type Balanceline	D4	EM	1 pc.
1000256024	Creapearl 2 lower jaw posterior tooth Type Balanceline	D4	EM	1 pc.
1000256025	Creapearl 2 upper jaw posterior tooth Type Balanceline	D4	ES	1 pc.
1000256026	Creapearl 2 lower jaw posterior tooth Type Balanceline	D4	ES	1 pc.
1000256027	Creapearl 2 upper jaw posterior tooth Type Balanceline	D4	FM	1 pc.
1000256028	Creapearl 2 lower jaw posterior tooth Type Balanceline	D4	FM	1 pc.
1000256029	Creapearl 2 upper jaw posterior tooth Type Balanceline	D4	FS	1 pc.
1000256030	Creapearl 2 lower jaw posterior tooth Type Balanceline	D4	FS	1 pc.
1000256031	Creapearl 2 upper jaw posterior tooth Type Gnathosline	D4	GM	1 pc.
1000256032	Creapearl 2 lower jaw posterior tooth Type Gnathosline	D4	GM	1 pc.
1000256033	Creapearl 2 upper jaw posterior tooth Type Gnathosline	D4	GS	1 pc.
1000256034	Creapearl 2 lower jaw posterior tooth Type Gnathosline	D4	GS	1 pc.

CREAPEARL 2 DENTURE TEETH - PRESENTATION BOX

Article no.	Article name	Tooth shade	Shape	Content
CR00000001	Creopal Presentation Box, blank			1 pc.
1000300011	Creapearl 2 Presentation Box, incl. 33 sets	A1	all shapes	1 pc.
1000300012	Creapearl 2 Presentation Box, incl. 33 sets	A2	all shapes	1 pc.
1000300013	Creapearl 2 Presentation Box, incl. 33 sets	A3	all shapes	1 pc.
1000300014	Creapearl 2 Presentation Box, incl. 33 sets	A3,5	all shapes	1 pc.

CREAPEARL 2 ACCESSORIES

Article no.	Article name	Tooth shade	Shape	Content
1000300009	Creapearl 2 Tooth shade guide			1 pc.
1000300030	Tooth cabinet (blank, without inlays, 5 drawers)			1 pc.
PEARL00003	Assortment inlay for 72 anterior sets			1 pc.
PEARL00004	Assortment inlay for 48 posterior sets			1 pc.

YOUR LOCAL DEALER



DISTRIBUTOR
Creation Willi Geller International GmbH | Koblacherstraße 3, 6812 Meiningen, Austria
Phone +43 (0)5522 76784, Fax +43 (0)5522 76784-59 | info@creation-willigeller.com, www.creation-willigeller.com

MANUFACTURER
KLEMA Dentalprodukte GmbH | Koblacherstraße 3a, 6812 Meiningen, Austria